

Aspiring Minds' Campus Analysis Report

Dr Ambedkar Institute Of Technology Bangalore

(B.E/ B.Tech, 2023)



Aspiring Minds Assessment Pvt. Ltd.

Study of Students' Employability and their Performance in AMCAT

TABLE OF CONTENTS

Purpose of this Report	3
Introduction	5
Score Interpretation	7
Percentile Interpretation	8
Section No. 1 - Students\' Capability and Training Need Analysis	9
I. Inferences	10
II. Performance Summary	11
III. Training Suggestion	12
Section No. 2 - Students\' Employability	13
I. Perspective on Corporate Shortlisting Criteria	13
II. Employability Prospects	14
III. Bird's-eye-view of Employability	15
Section No. 3 - Intra Campus Comparison	16
I. Stream Comparison	16
Section No. 4 - Aspiring Minds' Concluding Words	20
Section No. 5 - Appendix	21
I. Candidates Score Table	21
II. Statistical Significance (Confidence)	39
III. National Average (Norm)	39
IV. Variance (Standard Deviation)	39
V. About Aspiring Minds	40

Purpose of this Report

The Aspiring Minds Campus Analysis Report provides a detailed analysis of the student quality and their employability in the industry. Our aim is to produce a report which is useful to the campus and includes a comprehensive comparison across different degrees, streams and batches. All such analysis will serve as an employability checkup for students and accordingly, the administration can prioritize its efforts to increase the overall student employability.

The various sections of this report give a broad view on numerous aspects related to the performance of students. These sections contain tables and charts which have been constructed after an in-depth analysis of AMCAT assessment data collected from your campus. We evaluate your students' performance in comparison to the nation-wide norms, which are calculated from a sample of entry-level job-aspirants over 22 states across India. This comparison reveals those areas in which your students fare better (or otherwise) than the average student assessed by us, and determines the employability of the students in diverse industries. This report will give a clear picture of the employability status of students eligible for the listed companies and also help the institute to improve on the weak areas figured by Aspiring Minds' analysis.

We also provide an intra-campus analysis to give an overview of the characteristics of top performing students in comparison to the rest, such that appropriate measures can be taken to help the low performers fare better.

On the basis of our analysis, we suggest certain recommendations for your campus. We are certain that these recommendations will help Dr Ambedkar Institute Of Technology Bangalore march towards its goal of providing excellent education to the students, which will result in better employability. Our recommendations, if properly implemented, will also help increase the standing of the campus amongst prospective students.

Data Snapshot

Campus	Dr Ambedkar Institute Of Technology Bangalore
Date of testing	11th September 2019
Degree tested	B.E/ B.Tech (801 students)
Number of students compared in each stream	
Computer Science	177 students
Information Technology	52 students
EEE,EE	52 students
Electronics and Communication	208 students
Mechanical	127 students
Civil	89 students
Electronics and Instrumentation	50 students
Industrial Engineering	22 students
Others	24 students

Note: some students either did not enter their stream or entered it incorrectly. These students have not been included in any stream. Thus total students tested could be more than students in all reported streams.

Introduction

This report is based on the results of AMCAT assessment conducted at your campus on 11th September 2019 where a total of 801 students were tested. AMCAT is a two and half-hour adaptive test with multiple modules including aptitude, domain skills and personality assessment. It is India's largest employability test and is taken by more than 30,000 students every month. Being India's only adaptive employability test, it is used as a benchmark for hiring by several companies across India. The details of AMCAT assessment are as follows:

AMCAT Modules
I. English Comprehension
II. Quantitative Ability
III. Logical Ability
IV. Basic IT Applications
V. Aspiring Minds Personality Inventory (AMPI)

I. English Comprehension

Familiarity with the English Language in its various nuances is an essential skill, especially in the current climate of global networking. Ideally, any recruitment should involve a test of skills in handling the language in ways that promote the objectives of the company. Needless to state, an appropriate test is necessary.

Our English test uses a variety of internationally standardized resources for framing questions aimed at determining the candidate's ability to a) understand the written text (b) comprehend the spoken word and (c) communicate effectively through written documents. The test broadly covers the following areas:

- a. A wide-ranging vocabulary to cope with general and specific terminology.
- b. Syntax and sentence structure, the incorrect use of which distorts meaning and becomes a communication hurdle.
- c. Comprehension exercises designed to test a candidate's ability to read fluently and understand correctly.
- d. The ability to understand and use suitable phrases, which enrich the meaning of what is conveyed.

Time management and accuracy in conformity with the examiner's criteria.

II. Quantitative Ability

The Quantitative Ability assesses the ability of the candidate in following two aspects:

- a. Basic understanding of numbers and applications
This section tests whether the candidate has understanding of basic number system, i.e., fractions, decimals, negative, positive, odd, even numbers, rational

numbers, etc. The candidate should know how to do basic operations on these numbers, understand concepts of factors/divisibility and have good practice of algebra. Apart from operations on numbers, the candidate should know how to convert a real-world problem into equations, which is to be solved to find an unknown quantity. The candidate is tested on Word Problems representing various scenarios to assess the same.

b. Analytical/Engineering Maths

These are aspects of mathematics needed for Engineering disciplines and data analysis. This includes permutation-combination, probability and understanding of logarithms.

III. Logical Ability

The Logical Ability section assesses the capacity of an individual to interpret things objectively, to be able to perceive and interpret trends to make generalizations and be able to analyze assumptions behind an argument/statement. These abilities are primary for success of a candidate in the industry. Specifically, these are divided into following sections:

- a. Deductive Reasoning: Assesses the ability to synthesize information and derive conclusions.
- b. Inductive Reasoning: Assesses the ability to learn by example, imitation or hit-and-trial. This also provides an indication of how creative the individual is.
- c. Subjective Reasoning: Assesses the critical thinking ability of an individual to see through loopholes in an argument or group of statements.

All these abilities are tested both using numerical and verbal stimuli. Coachable questions have been identified and removed.

IV. Basic IT Applications

In the current scenario, knowing how to use the computer is essential for all professions. This module specifically assesses the suitability of candidates for the ITeS sector, Customer Support positions, Data Entry roles, Content Writers, Journalists, Marketing/Sales, etc.

The basic thrust of the module is not to test theoretical computer concepts, but test whether the candidate recognizes different parts of the computer and knows how to use the computer for day-to-day tasks such as word processing, using the Internet, making presentations, etc. The test also assesses whether the candidate has experience in debugging problems in computer hardware/operations and whether he/she knows how to change some basic settings. The test includes the following sections.

- A. Hardware Usage and Organization
- B. Operating System Usage and Concepts
- C. Basic Software and Internet

V. AMPI: Aspiring Minds Personality Inventory

It is the first personality inventory designed for personality analysis of Indian college graduates for the purpose of inputs to corporate personnel selection. AMPI is based on the five factor model, which is by far the only scientifically validated and reliable personality model. Several scientific studies across the world have shown that different combinations of the five factor personality traits strongly correlate to different job profiles and predict long term job performance reliably. AMPI analysis will be a worthwhile objective input to the corporate selection process and help find better matches to job profiles. The AMPI questionnaire asks for candidate's reaction under various scenarios, his/her beliefs, likes-dislikes to ascertain his/her personality factors. Factors map to traits such as candidate motivation, self-discipline, sociability, persistence, confidence, emotional stability, etc. which both intuitively and scientifically map to job requirements. AMPI builds in a strong proprietary methodology to control distortions due to social desirability and answer-faking.

AMPI has been designed specifically keeping the fresh Indian graduates in mind. Context is very important in design of items. AMPI items take into consideration the cultural sensibilities of Indians, the scenarios students face at college/home, also depending on the socio-economic status of the target population. This brings AMPI into a unique position as compared to generic/Western inventories, which do not suit our target population and fail miserably.

AMPI's scoring is based on statistical techniques of factor analysis, polytomous item analysis and structural modeling. Norms have been set on large candidate assessment done on final year graduates. Testforms are auto-generated such that each factor can be reliably predicted in feasible amount of time. Test-retest reliability and test validity are statistically guaranteed.

AMPI traits are:

- a. Extraversion
- b. Conscientiousness
- c. Emotional Stability
- d. Openness to Experience
- e. Agreeableness

Score Interpretation

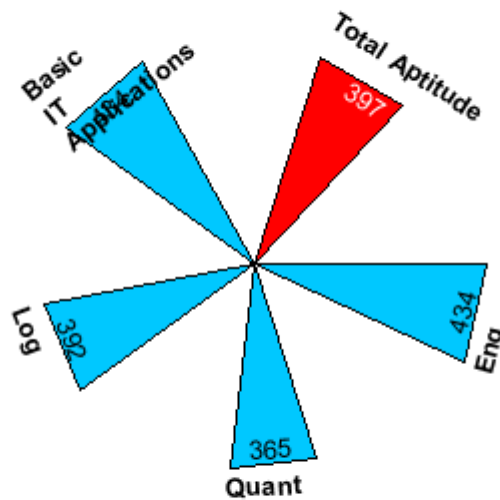
All scores lie between 100 and 900. The scores are normalized on a Gaussian curve using statistical techniques. The scores follow global standards of validity and reliability. They are valid for three years and remain consistent on repeat testing unless the candidate's ability improves because of sustained long term efforts.

Percentile Interpretation

The percentile of the candidate is calculated over a National average group based on the percentile of all students tested by Aspiring Minds. Several statistical studies conducted demonstrate clearly that the percentiles are stable for a year and will not vary more than two percentile points. The percentile is a very important metric and gives an idea of the candidate's rank in comparison with all graduates nationwide.

Section 1 - Students' Capability and Training Need Analysis

This section shows the overall performance of the campus students, along with their average and standard deviation in each module. In Campus Aptitude and Skill Chart below, BLUE triangles represent average score of your campus in each module. The RED triangle represents Total Aptitude score, which comprises of English, Quantitative Ability and Logical Ability scores.



Campus Aptitude And Skill Chart

The Campus Ability Table below shows the campus average scores (percentiles) and their standard deviations in comparison with the National norms. It also indicates if the difference between the Campus Average score and the National Average score is significant and if so, at what confidence level. Norm is the National Average of all the candidates tested on AMCAT. Confidence level refers to the likelihood (ranging from 0 to 100%) that the results observed in the study are real, and not due to chance. In this analysis, if confidence level is less than 90%, it indicates that the difference between the Campus Average and the National Average is not significant and that both the scores are equivalent. For confidence level greater than or equal to 90%, the difference between the Campus Average and the National Average is considered significant. If the difference is positive, on an average, the campus students are performing better than the National Average and vice versa.

Campus Ability Table

Modules Attempted	Campus Average Percentile	Campus Average (Std. Dev.)	National Average (Std. Dev.)	Difference (Campus - National)	Confidence	Is Significant?¹
English Comprehension	34%	434 (103)	475 (100)	-41	100%	Yes
Quantitative Ability	13%	365 (124)	495 (115)	-130	100%	Yes
Logical Ability	24%	392 (78)	465 (101)	-73	100%	Yes
Basic IT Applications	15%	434 (156)	565 (124)	-131	100%	Yes
Total Aptitude	22%	397 (83)	478 (105)	-81	100%	Yes

¹ if confidence level is less than 90%, it indicates that the difference between Campus Average and National Average is not significant and that both the scores are equivalent.

I. Inferences

1. English Comprehension

Communication is the key to building relationships and trust that leads to success in business. English is a corporate language and hence, the ability to read and comprehend this language effectively is essential to qualify for all types of job profiles, whether it is technical or non-technical. Although the difference is not large, it is not very pleasing to find that the students of your institute, on an average, have scored **lower than the National Average** in English module. We sincerely believe that students can improve their English with a little more effort and dedication towards the language. By making English communication and reading a habit, students can improve their score to go beyond the National Average. The campus and the faculty also need to create a conducive environment, where students are encouraged to communicate in English.

2. Quantitative Ability

Quantitative Ability measures a person's ability to deal with numbers and real-world problems quantitatively and mathematically. It is the ability to convert a real world problem into equations which can then be solved to find the result. This module is designed to measure a candidate's basic maths and algebraic skills, his/her understanding of basic quantitative concepts and his/her ability to reason quantitatively, solve quantitative problems and interpret graphical data. In Quantitative Ability module, your campus has **not performed well and on an average, their scores are much lower than the National Average**. Your students should work on the understanding of basic concepts in this module. They should practice a variety of questions from all the areas of this module, gradually moving to higher difficulty levels.

3. Logical Ability

The purpose of Logical Ability module is to test students' logical reasoning skills and to check their intuitive ability, decision making capability, problem solving approach and other areas which are important from a company's perspective. People with strong Logical Reasoning are quicker to perceive and interpret things objectively. Therefore, proficiency in this module is desired for all job profiles. The performance of your students in **Logical Ability section is not up to the mark. On an average, the scores are way below the National Average.** Your institute has to take firm steps to ensure that the students perform well in this section. Students should practice logical puzzles and games of various kinds to improve their logical reasoning skills. The faculty should take sincere efforts to effectively build a strong foundation of logical reasoning in students.

4. Basic IT Applications

The Computer Fundamentals module tests for the basic knowledge of a candidate about the working on Computer and its associated technology. The module tests student's proficiency in using Windows, browsing the Internet, etc. As satisfactory computer knowledge is expected of all in the corporate world, good performance in this module is a must for all job profiles. Scores obtained by your students, on an average, are **significantly lower than the National Average.** The campus authority can help students improve on it by providing opportunity to the students to broaden their knowledge by teaching computer hardware/software, as well as the internet. Ensure that your students are abreast with the changes happening in the fast moving world of computers, which will help them in the future. Only concerted and sincere efforts can help your students perform better than the National Average.

II. Performance Summary

From the above analysis, it is clearly visible that the **performance of the students at your campus is not satisfactory in English Comprehension, Quantitative Ability, Logical Ability and Basic IT Applications**, therefore additional training sessions and corrective measures are required by the campus authorities. Methodologies such as mock tests, assignments and extra classes can become a valuable strategy for the benefit of students. The campus can also include proactive mentoring sessions for weak students and review their skills in the given area(s). Another approach can be to hold training sessions focusing on comprehensive guidance for the students to excel in their weak areas. The gain resulting from these training sessions and your continuous support will allow overall development of the student and further enhancement in their abilities.

III. Training Suggestions

This section lists areas where your students need to improve on the basis of their performance in the AMCAT. For each module, according to the degree of improvement needed, appropriate suggestions have been provided.

Campus Training Requirement Table

Area to Improve Upon	Degree of Improvement	Suggestion
English Comprehension	Strong	Encourage playing games like Scrabble, Crossword, etc. in order to improve their English vocabulary. You can try placing such word-games in the campus library. Guide the students to scribble key points while reading any passage/paragraph. This will help them understand the essence of the text and find answers to passage-based questions easily. Conduct tests and quizzes under time constraints which would help students judge their performance and further improve upon it.
Quantitative Ability	Very Strong	Time-honored mock tests should be conducted for the students so that they are able to judge themselves. Real time problems on different topics should be extensively discussed to equip the students with different concepts. Encourage pupils not to read mathematics, but to write and practice. That is the only way to learn mathematics.
Logical Ability	Very Strong	Include explicit training for reasoning skills to make the students practice different types of questions such as syllogism, blood relations, direction sense, pattern recognition, etc. Advise students to develop their own notations so that they can represent the problem using proper symbols, diagrams etc. Encourage students to solve different types of puzzles and questions which need logical thinking. Help them understand the problem clearly in their minds before they start solving it.
Basic IT Applications	Very Strong	For any doubt or query, Internet is the best source of information; encourage students to make regular use of it. Give them assignments which entail usage of different parts of the computer system. In your computer labs, let the students explore and assemble their own computer system so that they can learn things practically.

Section 2 - Students' Employability

This section gives you an approximate idea about the kind of companies your students are competent for. This section also provides an insight into the criteria used by different companies for their hiring process. Additionally, an estimate of the employability of your campus students in different sectors is mentioned. In order to improve employability prospects, domains in which your students need to focus their efforts are also listed.

I. Perspective on Corporate Shortlisting Criteria

In this section, we discuss the different kind of job profiles available for fresh graduates. For each domain, we discuss the nature of the job and the kinds of skills required to succeed in the particular job profile.

- **IT Services**

These types of service companies have large training setups of their own. They provide system integration solutions, software application development, testing solutions and many other services. For large services companies, Computer Programming score is not an important criterion. They look for candidates with acceptable English and Logical Reasoning along with strong Quantitative Ability skills. A good score in computer programming module is an advantage. HCL, TCS, Wipro, Satyam, Polaris etc are some of the major large scale service based companies.

- **ITeS and BPO**

Business process outsourcing companies can be aptly defined as those that act to utilize the services of a third party in order to perform its back office operations. The BPO market is forecast to hit \$450 billion by 2012. These companies look at moderate to outstanding/exceptionally good English, depending on whether they have national or international clients. The other parameters they use for short listing are acceptable Logical Reasoning and Computer skills. GE Capital, Convergys, Wipro Spectramind and Dell are some of the prominent BPO entities.

- **Hardware and Networking**

These companies specialize in Hardware and Network Support and basically provide integrated solutions for business enterprise applications, networking equipment and network management. That is they help manage organization's computing resources up and running. These companies primarily look for average quantitative and logical ability. Since the job does not include a lot of interaction with clients, they do not necessarily require good scores in English Comprehension. Cisco, Hewlett Packard, Nortel, NEC, Citrix and Netgear are some of the Hardware/Networking companies.

- **KPO/Analyst**

Knowledge Processing Outsourcing (popularly known as KPO) calls for the application of specialized domain pertinent knowledge. KPO business entities provide typical domain-based processes, advanced analytical skills and business expertise, rather than just process expertise. These companies look for an impressive command in English and sound knowledge in both Quantitative and Logical Reasoning. Evalueserve, Ugam Solutions, 24/7 Customer, ICICI OneSource, etc. are some of the leading KPOs in India.

II. Employability Prospects

The following table suggests the methods to be implemented in order to improve employability of your students with reference to particular job profiles. We have investigated what precise skills are deficient in students which make them unemployable. These skills need to be improved through efforts of the student and campus. Campus administration is requested to go through these suggestions and implement them to make students more employable.

Campus Job Match Table

Type of Company	Percentage of Students Eligible	Percentage of Students Need some training	Percentage of Students Need lot of training
IT Services	7.4%	7%	85.6%
ITeS and BPO	39.4%	6.9%	53.8%
Hardware and Networking	30.3%	11.9%	57.8%
KPO/Analyst	3.9%	20.9%	75.2%

III. Bird's-eye-view of Employability

The following table suggests the methods to be implemented in order to improve employability of your students for each type of company. These recommendations are provided on the basis of weak modules for each company, which the faculty should work on to help their students. Campus is requested to go through these suggestions and implement them to elevate the chances of getting placed in that particular company.

Campus Employability Enhancement Table

Type of Company	Campus Employability Prospect	Areas in Need of Training for Improving Employability Chances
IT Services	Low	These companies are basically looking for good English and Logical skills with average Quantitative ability. If employability prospects is to be increased for this industry, campus faculty will need to focus on English Comprehension, Quantitative Ability and Logical Ability.
ITeS and BPO	Medium	These companies look for candidates proficient in English with average Logical and Quantitative abilities. If employability prospects is to be increased for this industry, campus faculty will need to focus on English Comprehension, Quantitative Ability and Logical Ability.
Hardware and Networking	Medium	These companies are basically looking for candidates with good English and average Logical abilities. If employability prospects is to be increased for this industry, campus faculty will need to focus on English Comprehension, Logical Ability and Quantitative Ability.
KPO/Analyst	Low	These companies look for candidates having proficiency in English with good Quantitative and Reasoning abilities. To increase the employability prospects for this industry, extra efforts are required by the campus authority on English Comprehension, Quantitative Ability and Logical Ability.

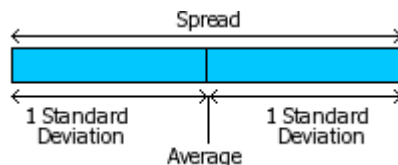
Section 3 - Intra Campus Comparison

In this section, we will compare assessment scores to create a comprehensive comparative analysis between different branches of a degree of your college. This section shall explain the competitiveness of students of each degree, branch and batch with others in the respective group.

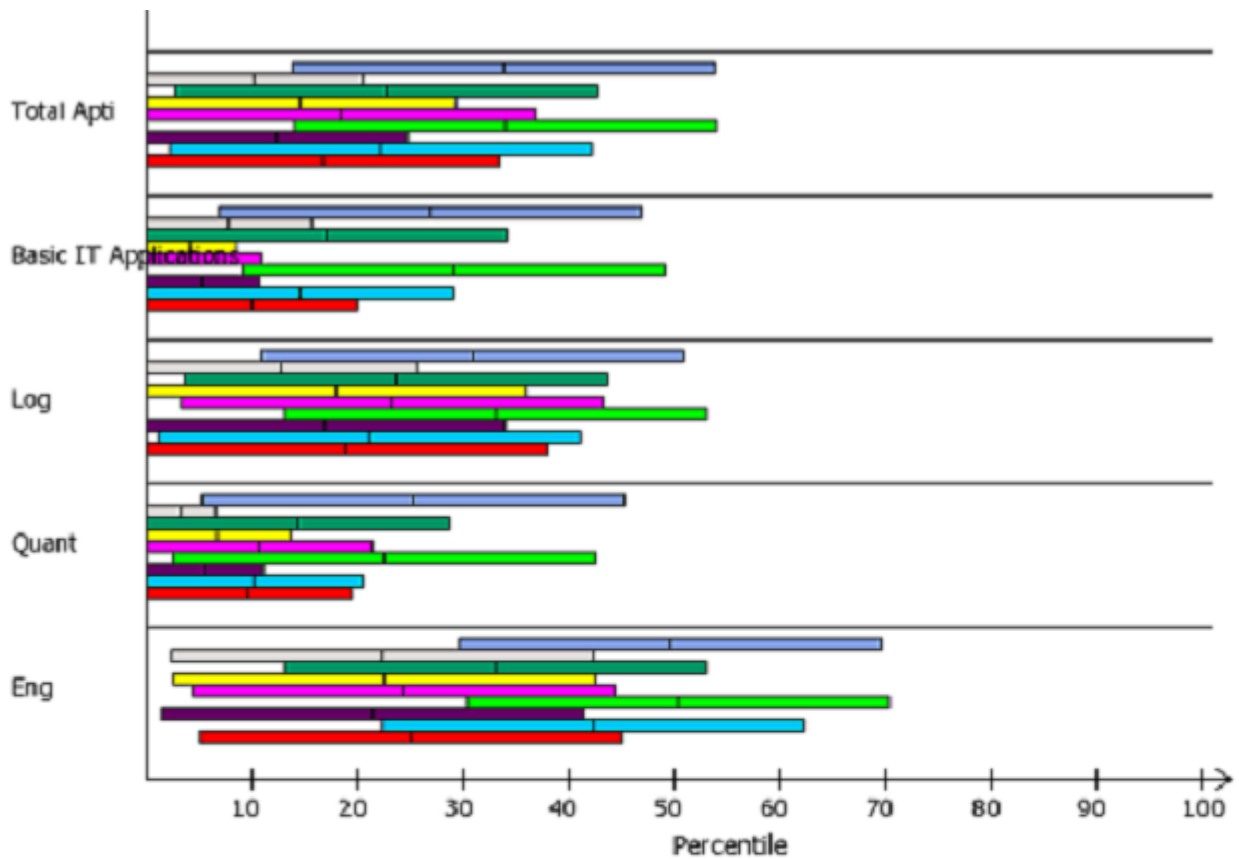
I. Stream Comparison

In this section, we compare the AMCAT scores of students categorized by their branch of study. Students from the following branches participated in AMCAT at your college.

1. Computer Science
2. Information Technology
3. EEE,EE
4. Electronics and Communication
5. Mechanical
6. Civil
7. Electronics and Instrumentation
8. Industrial Engineering
9. Others



The chart below shows the comparison of module-wise average scores for each stream. To interpret the chart, refer to the above illustration. Each horizontal bar represents the average score along with the standard deviation of a particular branch in that module. The vertical line at the center of each bar represents the average score. The length of bar represents the range of scores obtained by students of that stream.



Note: color bands are in order.

For each module, the following table lists the top scoring streams. Only the modules which are common for all the streams have been considered in the table.

Top Scoring Streams For Each Module

Rank	English Comprehension	Quantitative Ability	Logical Ability	Basic IT Applications
1	Computer Science	Information Technology	Computer Science	Computer Science
2	Information Technology	Computer Science	Information Technology	Information Technology

Note: streams with less than 5 students have not been considered for the analysis.

On the basis of AMCAT scores obtained by different streams in your campus, we make following inferences -

1. English Comprehension

In English Comprehension **Computer Science students are the top scorers, their average score exceeding that of Information Technology** by 0.81 percentile points while **Civil students are the lowest scorers**. Also, note that Mechanical, Others, Civil, EEE,EE, Electronics and Instrumentation, Electronics and Communication, Industrial Engineering and Information Technology students have scored poorly in comparison to the National Average whereas Computer Science students have performed well with respect to the National Average.

2. Quantitative Ability

When it comes to Quantitative Ability, **Information Technology students have grabbed the top position** among all streams. **Industrial Engineering are the last rankers** with a difference of 22.03 percentile points. When compared to the National Average, all the streams have underperformed in this section.

3. Logical Ability

In Logical Ability **Computer Science students are the top scorers, their average score exceeding that of Information Technology** by 2.07 percentile points while **Industrial Engineering students are the lowest scorers**. Also, note that all the streams have scored poorly in comparison to the National Average.

4. Basic IT Applications

In Basic IT Applications **Computer Science students are the top scorers, their average score exceeding that of Information Technology** by 2.12 percentile points while **Electronics and Instrumentation students are the lowest scorers**. Also, consider that all the streams, on an average, have scored low in comparison to the National Average.

In your campus, **Computer Science stream performed outstandingly well in maximum number of modules**. Also, Industrial Engineering stream performed poorly in maximum number of modules in comparison to other streams, and therefore need special attention.

Aspiring Minds' Concluding Words

To summarize the overall analysis of your campus done by Aspiring Minds, key-points from all sections are highlighted below:

- The performance of the B.E/ B.Tech students in your campus is **not satisfactory in English Comprehension, Quantitative Ability, Logical Ability and Basic IT Applications**, therefore additional training sessions and corrective measures are required by the campus authorities.
- It is clearly evident that **% and 39.4%** of your students are eligible to work in **and ITeS and BPO** which is good, however **7.4%, 30.3% and 3.9%** of your students are eligible to work in **IT Services, Hardware and Networking and KPO/Analyst** respectively which is an area of concern.
- In your campus, **Computer Science stream performed outstandingly well in maximum number of modules**. Also, Industrial Engineering stream performed poorly in maximum number of modules in comparison to other streams, and therefore need special attention.

The strongest recommendation Aspiring Minds will like to give is initiation of classes to improve the weak areas of candidates. Apart from classes, regular quizzes and special training sessions should also be initiated, where students answer questions under time constraints. The classes should be student-friendly so that the students are open to questions and are free to ask their doubts. Peer teaching can be another way to increase the learning of students in the class

Along with increasing the employability of the institute, this will help your students compete with other candidates in a more effective and efficient way. With regard to areas where your students scored well, a sustained effort is needed. Regular assignments of problems should be given so that the students can accelerate their performance.

We strongly request the campus authorities to direct all students to follow the performance feedback given by Aspiring Minds based on their AMCAT scores. The campus authorities can go a long way in reminding students about their strengths and weaknesses, thus encouraging them to uphold their strengths and improve on their weaknesses. Consider special classes, better teaching processes and focused courses so that students get a good platform to improve and perform. We also strongly suggest conducting AMCAT again at campus after 4 months of dedicated hard work by students and campus authorities. This shall give students a benchmark to improve themselves, and help us understand if the initiated training program was useful. Of course, it would help students as well, with better scores leading to better job opportunities.

We thank Dr Ambedkar Institute Of Technology Bangalore for giving us an opportunity to conduct AMCAT in their campus. For any clarification or further analysis, we can be contacted at campus@aspiringminds.in 0 or (91) 124 4148777.

Appendix

I. Candidates Score Table

The Candidates score table below shows the scores and percentile of all the students of your campus tested on AMCAT. All scores lie between 100 and 900.

AMCAT ID	Name	AMCAT Score, Percentile							
		English Comprehension		Quantitative Ability		Logical Ability		Basic IT Applications	
158471636917978	A B	230	1 %	165	1 %	325	8 %	285	0 %
158471636651798	A Bharath Kumar Kumar	350	14 %	180	1 %	310	6 %	405	5 %
158471636880965	Aakash Chalise	335	11 %	385	26 %	495	62 %	485	38 %
158471636844287	Aaman Chakma	580	84 %	210	2 %	425	35 %	605	96 %
158471636986891	Aastha Singh	595	87 %	340	16 %	455	46 %	655	99 %
158471636529556	Aathira Suresh	395	25 %	240	3 %	205	1 %	285	0 %
158471636877514	Aayeesha Najla	675	97 %	270	6 %	335	10 %	615	97 %
158471636310419	Aayush Neupane	580	84 %	400	31 %	480	56 %	655	99 %
158471636167475	Abdul Qureshi	440	39 %	195	1 %	265	2 %	395	4 %
158471636855854	Abhijit Nashi Nashi	315	8 %	385	26 %	340	11 %	475	32 %
158471636666954	Abhilasha D	370	18 %	285	7 %	350	13 %	205	0 %
158471636770555	Abhimanyu N.m	370	18 %	270	6 %	300	5 %	605	96 %
158471636423114	Abhineet Singh	525	69 %	560	80 %	565	84 %	555	81 %
158471636485697	Abhishek Hegde	430	36 %	415	35 %	340	11 %	605	96 %
158471636962852	Abhishek Chauhan	580	84 %	535	73 %	435	38 %	515	58 %
158471636491263	Abhishek M	580	84 %	505	64 %	375	19 %	715	100 %
158471636056353	Abhishek Ca	385	22 %	575	83 %	370	17 %	265	0 %
158471636761689	Abhishek Mahagave	370	18 %	285	7 %	315	7 %	475	32 %
158471636820123	Abhishek Abhi	440	39 %	270	6 %	425	35 %	345	0 %
158471636125030	Abhishek Chakraborty	490	57 %	505	64 %	455	46 %	675	100 %
158471636777084	Abhishek Surve	420	32 %	575	83 %	360	15 %	735	100 %
158471636537887	Abhishek Sogarwal	525	69 %	590	86 %	-	-	585	91 %
158471636926741	Abhishek Amadla	370	18 %	400	31 %	385	21 %	535	70 %
158471636908739	Abhishek.a Abhi	255	3 %	120	0 %	325	8 %	405	5 %
158471636970863	Adarsh Hegde	300	6 %	490	60 %	400	26 %	415	7 %
158471636922496	Adarsh Ls	560	79 %	300	9 %	420	33 %	465	26 %
158471636314147	Adarsh B R	335	11 %	-	-	400	26 %	495	45 %
158471636242552	Adarsh Gidd Gidd	385	22 %	430	40 %	340	11 %	205	0 %
158471636376839	Aditya Chavan	465	48 %	325	13 %	375	19 %	565	85 %
158471636832222	Aditya Singh	500	61 %	370	22 %	470	52 %	525	64 %
158471636158392	Aiesha Banu.a.m. Banu.a.m.	350	14 %	270	6 %	275	3 %	265	0 %
158471636881513	Aishwarya Padashetty	360	16 %	535	73 %	335	10 %	405	5 %
158471636051565	Aishwarya K	665	96 %	490	60 %	395	24 %	535	70 %
158471636762457	Ajay Chowhan	280	4 %	240	3 %	315	7 %	225	0 %
158471636032460	Ajay Hegde	430	36 %	255	4 %	395	24 %	405	5 %
158471636929611	Ajjaiah U.n U.n	315	8 %	255	4 %	-	-	325	0 %
158471636348851	Akash S H	385	22 %	-	-	-	-	355	1 %

AMCAT ID	Name	AMCAT Score, Percentile							
		English Comprehension		Quantitative Ability		Logical Ability		Basic IT Applications	
158471636229267	Akash Ravikumar	395	25 %	300	9 %	540	77 %	555	81 %
158471636114720	Akash A K	325	9 %	270	6 %	435	38 %	465	26 %
158471636754740	Akash Devang	395	25 %	370	22 %	425	35 %	595	94 %
158471636128164	Akash Ulundageri	455	45 %	560	80 %	400	26 %	185	0 %
158471636694644	Akash Hosagoudar	455	45 %	430	40 %	385	21 %	535	70 %
158471636150269	Akasha Hr Akash	350	14 %	165	1 %	370	17 %	195	0 %
158471636030412	Akhil P	385	22 %	430	40 %	340	11 %	725	100 %
158471636674645	Akhila Bg	325	9 %	285	7 %	410	29 %	265	0 %
158471636725405	Akshatha V Raj	335	11 %	325	13 %	445	42 %	525	64 %
158471636638587	Akshay Vp	545	75 %	460	50 %	350	13 %	605	96 %
158471636476157	Akshay Munnolli	290	5 %	255	4 %	340	11 %	335	0 %
158471636809194	Akula Kumari	510	64 %	445	45 %	520	71 %	485	38 %
158471636673044	Amar T R Amar T R	490	57 %	520	69 %	375	19 %	285	0 %
158471636743180	Ambuj Mishra	500	61 %	490	60 %	555	81 %	595	94 %
158471636619549	Ambuj Singh	385	22 %	520	69 %	395	24 %	265	0 %
158471636537834	Amit Mantha	385	22 %	505	64 %	570	85 %	755	100 %
158471636398933	Amogha Varsha Kv	315	8 %	195	1 %	205	1 %	165	0 %
158471636808171	Amulya S	265	3 %	270	6 %	350	13 %	335	0 %
158471636361935	Amulya.p.b Ammu	420	32 %	475	55 %	385	21 %	425	10 %
158471636312429	Anagha R	570	82 %	355	19 %	375	19 %	665	100 %
158471636079798	Ananda Gr Ananda Gr	370	18 %	180	1 %	265	2 %	325	0 %
158471636715020	Ananya L	395	25 %	385	26 %	435	38 %	475	32 %
158471636741104	Ananyasri S	560	79 %	210	2 %	350	13 %	485	38 %
158471636588398	Anees Fthima	440	39 %	310	10 %	455	46 %	535	70 %
158471636032074	Anil Kumar	325	9 %	165	1 %	300	5 %	415	7 %
158471636161201	Anil M	405	28 %	415	35 %	495	62 %	325	0 %
158471636024951	Anil Yadav	370	18 %	210	2 %	420	33 %	205	0 %
158471636031610	Anirudh Mitta	490	57 %	740	99 %	580	87 %	715	100 %
158471636319143	Anisha Pattnaik	650	95 %	620	91 %	505	65 %	595	94 %
158471636967396	Anjali Devi N	455	45 %	445	45 %	470	52 %	405	5 %
158471636880166	Ankita Naiik	335	11 %	285	7 %	310	6 %	145	0 %
158471636172784	Ankitha R	430	36 %	415	35 %	455	46 %	255	0 %
158471636370276	Anu S	290	5 %	210	2 %	360	15 %	205	0 %
158471636764993	Anusha M G	490	57 %	355	19 %	460	48 %	615	97 %
158471636550062	Anusha Bk	430	36 %	195	1 %	255	2 %	205	0 %
158471636467134	Anusha H	440	39 %	400	31 %	420	33 %	675	100 %
158471636524516	Anusha K	570	82 %	415	35 %	310	6 %	365	1 %
158471636248729	Anusha Kothlapur	350	14 %	355	19 %	425	35 %	535	70 %
158471636673023	Anusha L	420	32 %	355	19 %	375	19 %	415	7 %
158471636104029	Anusha P	420	32 %	225	2 %	395	24 %	465	26 %
158471636747603	Anushree J	350	14 %	240	3 %	350	13 %	595	94 %
158471636890639	Anushree R N Anushree R N	360	16 %	325	13 %	395	24 %	425	10 %
158471636691640	Anvith Gowda	430	36 %	285	7 %	360	15 %	425	10 %
158471636511165	Apsara C	595	87 %	355	19 %	385	21 %	465	26 %
158471636677103	Apsara H.k H.k	290	5 %	105	0 %	335	10 %	275	0 %

AMCAT ID	Name	AMCAT Score, Percentile							
		English Comprehension		Quantitative Ability		Logical Ability		Basic IT Applications	
158471636043279	Apurv Apurv	525	69 %	650	94 %	580	87 %	465	26 %
158471636538682	Archana Krishnan	455	45 %	340	16 %	460	48 %	455	21 %
158471636944640	Archana Acharya	430	36 %	255	4 %	370	17 %	275	0 %
158471636514084	Archana. K H	245	2 %	225	2 %	335	10 %	385	2 %
158471636336832	Arif Arab	230	1 %	300	9 %	425	35 %	335	0 %
158471636844119	Arun D	325	9 %	415	35 %	385	21 %	595	94 %
158471636799196	Arushi M	465	48 %	180	1 %	275	3 %	335	0 %
158471636120518	Asha R	300	6 %	300	9 %	290	4 %	465	26 %
158471636235869	Ashish Gokhale	615	91 %	325	13 %	-	-	265	0 %
158471636304168	Ashutosh Parab	545	75 %	635	93 %	510	67 %	475	32 %
158471636639805	Ashwajeet Aloorkar	265	3 %	325	13 %	370	17 %	315	0 %
158471636780299	Ashwas Ajay	490	57 %	400	31 %	485	58 %	605	96 %
158471636419889	Ashwini Kale	360	16 %	285	7 %	315	7 %	195	0 %
158471636723266	Ashwini Hk Ashwini Hk	455	45 %	460	50 %	395	24 %	345	0 %
158471636940509	Avinash H V	350	14 %	285	7 %	455	46 %	485	38 %
158471636613326	Avinash K	370	18 %	340	16 %	400	26 %	405	5 %
158471636230382	Ayshna Goenka	430	36 %	505	64 %	470	52 %	595	94 %
158471636370306	Ayush Mishra	630	93 %	535	73 %	455	46 %	465	26 %
158471636740022	Ayush B K	440	39 %	680	97 %	445	42 %	525	64 %
158471636858017	B Mohan	475	52 %	385	26 %	410	29 %	475	32 %
158471636662365	B N Shashank	525	69 %	325	13 %	325	8 %	665	100 %
158471636230822	B.k Jeevan	440	39 %	270	6 %	300	5 %	395	4 %
158471636880870	B.r Rohith	510	64 %	575	83 %	370	17 %	525	64 %
158471636796715	Bandenavaj Tahashildar	455	45 %	535	73 %	340	11 %	475	32 %
158471636864780	Banuprakash Yadav	405	28 %	240	3 %	360	15 %	465	26 %
158471636132219	Basavaraj Karadakal	420	32 %	310	10 %	410	29 %	375	2 %
158471636474132	Basavaraj Humanabad	420	32 %	-	-	350	13 %	405	5 %
158471636420490	Basavaraj Subedar	385	22 %	270	6 %	350	13 %	335	0 %
158471636715007	Basavaraj Badiger	335	11 %	195	1 %	275	3 %	565	85 %
158471636295804	Basharat Thakery	230	1 %	430	40 %	470	52 %	455	21 %
158471636298534	Bavitha S	315	8 %	180	1 %	460	48 %	125	0 %
158471636663165	Beipazilai Kibby	350	14 %	355	19 %	285	4 %	425	10 %
158471636341338	Beluvigi Gagana	385	22 %	270	6 %	325	8 %	535	70 %
158471636173824	Bhagyashree Rajeshwar	420	32 %	195	1 %	290	4 %	185	0 %
158471636517820	Bharath A S	430	36 %	475	55 %	445	42 %	185	0 %
158471636282380	Bhargav S	475	52 %	725	99 %	580	87 %	665	100 %
158471636250425	Bhaskarareddy Nc Reddy	370	18 %	325	13 %	400	26 %	285	0 %
158471636294098	Bhavana H S	580	84 %	535	73 %	370	17 %	675	100 %
158471636376885	Bhavana Doddabasappanavar	475	52 %	340	16 %	510	67 %	465	26 %
158471636339466	Bhavana C	525	69 %	270	6 %	385	21 %	545	76 %
158471636425895	Bhavana R	360	16 %	285	7 %	310	6 %	555	81 %
158471636305338	Bhavana G S Bhavana	465	48 %	370	22 %	360	15 %	395	4 %
158471636189541	Bhavana.t. Ammu	385	22 %	355	19 %	410	29 %	415	7 %
158471636020187	Bhoomika Shekharaiah	395	25 %	400	31 %	350	13 %	405	5 %
158471636944501	Bhoomika K	490	57 %	240	3 %	470	52 %	535	70 %

AMCAT ID	Name	AMCAT Score, Percentile							
		English Comprehension		Quantitative Ability		Logical Ability		Basic IT Applications	
158471636048521	Bhumika S	420	32 %	310	10 %	255	2 %	205	0 %
158471636567246	Bhuvan H	615	91 %	460	50 %	370	17 %	475	32 %
158471636136725	Bhuvan D	465	48 %	270	6 %	395	24 %	545	76 %
158471636375387	Bhuvaneshwari.r Bhuvaneshwari.r	465	48 %	340	16 %	410	29 %	485	38 %
158471636103444	Bibek Yadav	440	39 %	355	19 %	335	10 %	405	5 %
158471636949682	Boomikha D	290	5 %	355	19 %	240	1 %	555	81 %
158471636585526	Brunda C	335	11 %	490	60 %	350	13 %	605	96 %
158471636548936	C Chhuana	350	14 %	-	-	400	26 %	415	7 %
158471636030274	Ch Shreya Chilkuri	280	6 %	255	7 %	315	13 %	395	4 %
158471636631858	Chaitanya Patel G.m	350	14 %	400	31 %	385	21 %	205	0 %
158471636140425	Chaithanya.j.umashankar Umashankar	245	2 %	255	4 %	310	6 %	415	7 %
158471636808949	Chaithra Rm	420	32 %	225	2 %	315	7 %	545	76 %
158471636268281	Chaithra Hg	440	39 %	255	4 %	340	11 %	405	5 %
158471636888279	Chandan B R	335	11 %	255	4 %	290	4 %	205	0 %
158471636008204	Chandan N	430	36 %	460	50 %	385	21 %	345	0 %
158471636280020	Chandan Gs	290	5 %	340	16 %	335	10 %	145	0 %
158471636704628	Chandana N	560	79 %	415	35 %	555	81 %	685	100 %
158471636157103	Chandana D M D M	455	45 %	270	6 %	375	19 %	135	0 %
158471636306825	Chandana G D Chandana Gd	500	61 %	180	1 %	335	10 %	335	0 %
158471636652981	Chandrika S N Chandrika S N	385	22 %	285	7 %	410	29 %	275	0 %
158471636532630	Channaveeresh J Hiremth	465	48 %	430	40 %	460	48 %	425	10 %
158471636280910	Chetan K R	475	52 %	400	31 %	485	58 %	205	0 %
158471636415303	Chetan Pali	360	16 %	255	4 %	310	6 %	325	0 %
158471636870467	Chetanakumar Jigalur	255	3 %	385	26 %	410	29 %	395	4 %
158471636548665	Chethan Ms	475	52 %	210	2 %	335	10 %	415	7 %
158471636464119	Chethan Ba	300	6 %	460	50 %	340	11 %	275	0 %
158471636039793	Chethan U	465	48 %	255	4 %	360	15 %	805	100 %
158471636399645	Chethan Bk Bk	325	9 %	270	6 %	335	10 %	335	0 %
158471636319970	Chidanand Ruddewadi	265	3 %	310	10 %	335	10 %	345	0 %
158471636431668	Chidannda C	440	39 %	355	19 %	-	-	535	70 %
158471636010461	Chinmaya M A	685	97 %	415	35 %	460	48 %	795	100 %
158471636391984	Chinnaswamy J J	405	28 %	430	40 %	340	11 %	445	17 %
158471636251148	Chirag T	395	25 %	535	73 %	520	71 %	545	76 %
158471636487541	Chirag Venugopal	455	45 %	535	73 %	445	42 %	395	4 %
158471636980018	Chiranjeevi B S	630	93 %	665	96 %	580	87 %	865	100 %
158471636416353	D.yamini Krishna	475	52 %	-	-	445	42 %	425	10 %
158471636832427	Dakshayini Ls	510	64 %	370	22 %	410	29 %	465	26 %
158471636972534	Darshan K P	290	5 %	285	7 %	370	17 %	405	5 %
158471636418086	Darshan Keshan	430	36 %	505	64 %	425	35 %	285	0 %
158471636254381	Darshan Vp Darshan Vp	245	2 %	370	22 %	265	2 %	235	0 %
158471636264767	Dasgeerahmad Nadaf	500	61 %	400	31 %	495	62 %	675	100 %
158471636097651	Davan H.s	465	48 %	460	50 %	435	38 %	485	38 %

AMCAT ID	Name	AMCAT Score, Percentile							
		English Comprehension		Quantitative Ability		Logical Ability		Basic IT Applications	
158471636665038	Deeksha Ht	440	39 %	240	3 %	350	13 %	535	70 %
158471636782605	Deekshith P	370	18 %	445	45 %	455	46 %	455	21 %
158471636389762	Deekshith Kumar V	430	36 %	310	10 %	300	5 %	415	7 %
158471636607258	Deekshitha Rk	510	64 %	355	19 %	455	46 %	405	5 %
158471636463472	Deepak C.r	395	25 %	300	9 %	385	21 %	285	0 %
158471636815086	Deepak Gond	475	52 %	355	19 %	340	11 %	415	7 %
158471636161538	Deepak Kumar	735	99 %	590	86 %	480	56 %	735	100 %
158471636189892	Deepak S Hugar	350	14 %	210	2 %	395	24 %	325	0 %
158471636926036	Deepika C	370	18 %	370	22 %	360	15 %	485	38 %
158471636179091	Devaraj Kamalakar Naik Naik	405	28 %	340	16 %	315	7 %	395	4 %
158471636608601	Devraj R	335	11 %	210	2 %	395	24 %	145	0 %
158471636607840	Dhanalakshmi Dhanalakshmi	265	3 %	370	22 %	275	3 %	155	0 %
158471636365332	Dharmaraj Rangannanavar	525	69 %	355	19 %	255	2 %	335	0 %
158471636542966	Dheeraj.n N	325	9 %	370	22 %	445	42 %	205	0 %
158471636827135	Dhiraj Mandal	455	45 %	635	93 %	455	46 %	665	100 %
158471636449112	Dhruthi L	440	39 %	475	55 %	435	38 %	665	100 %
158471636211842	Dhruvin Kanani	420	32 %	490	60 %	400	26 %	555	81 %
158471636204697	Digambar Panchal	265	3 %	300	9 %	300	5 %	475	32 %
158471636725470	Dileep Gowdar	385	22 %	255	4 %	375	19 %	475	32 %
158471636446176	Dilip D G	325	9 %	270	6 %	290	4 %	395	4 %
158471636343734	Dilip R	385	22 %	270	6 %	370	17 %	525	64 %
158471636646791	Dinesh N	465	48 %	310	10 %	410	29 %	475	32 %
158471636148623	Disha Shekar	420	32 %	490	60 %	435	38 %	255	0 %
158471636993499	Divya.r R	350	14 %	325	13 %	215	1 %	195	0 %
158471636796094	Divyashree.v Divya	475	52 %	300	9 %	410	29 %	465	26 %
158471636671899	Drashan S	560	79 %	340	16 %	250	2 %	395	4 %
158471636769836	Dushyanth K S	335	11 %	195	1 %	425	35 %	545	76 %
158471636693673	Ediga Bharadwaj	360	16 %	195	1 %	375	19 %	545	76 %
158471636137479	F Fathima	510	64 %	285	7 %	410	29 %	545	76 %
158471636018999	G Kumar	420	32 %	385	26 %	495	62 %	595	94 %
158471636718500	Gadadasu Archith	640	94 %	605	88 %	570	85 %	605	96 %
158471636857346	Gagan C	510	64 %	400	31 %	325	8 %	475	32 %
158471636353862	Gagan A	535	72 %	415	35 %	435	38 %	525	64 %
158471636040006	Gagan S	405	28 %	255	4 %	420	33 %	515	58 %
158471636286765	Gagana Y R	430	36 %	-	-	455	46 %	655	99 %
158471636763316	Gagana N L	430	36 %	270	6 %	420	33 %	125	0 %
158471636810204	Gagana.cm Gagana	370	18 %	370	22 %	290	4 %	125	0 %
158471636875469	Gahana N	510	64 %	310	10 %	435	38 %	325	0 %
158471636162172	Ganashree G S	465	48 %	300	9 %	315	7 %	395	4 %
158471636946077	Ganesh Mukri	255	3 %	195	1 %	350	13 %	335	0 %
158471636942214	Ganeshswaminathan R	650	95 %	535	73 %	510	67 %	625	98 %
158471636118441	Gangadhara H M	325	9 %	240	3 %	310	6 %	405	5 %
158471636737634	Gangadharaiah T G T G	290	5 %	370	22 %	385	21 %	465	26 %
158471636785316	Gayanand Patel	490	57 %	490	60 %	400	26 %	525	64 %

AMCAT ID	Name	AMCAT Score, Percentile							
		English Comprehension		Quantitative Ability		Logical Ability		Basic IT Applications	
158471636559617	Gayithri C V	360	16 %	490	60 %	460	48 %	275	0 %
158471636039983	Geethamani Lingaraju	280	4 %	240	3 %	400	26 %	355	1 %
158471636629874	Girish L	350	14 %	255	4 %	315	7 %	205	0 %
158471636392203	Gnaneshwar V.c Gnaneshwar V.c	230	1 %	270	6 %	310	6 %	265	0 %
158471636686801	Gokul R	315	8 %	550	77 %	395	24 %	395	4 %
158471636320093	Gopi Gowda	490	57 %	340	16 %	385	21 %	275	0 %
158471636657729	Goutham S	475	52 %	210	2 %	395	24 %	335	0 %
158471636410236	Goutham P	405	28 %	460	50 %	505	65 %	605	96 %
158471636652501	Govind Biradar	455	45 %	300	9 %	410	29 %	265	0 %
158471636024046	Gowrav Ks Gowrav Ks	430	36 %	240	3 %	370	17 %	335	0 %
158471636840410	Gowtham Bp	535	72 %	490	60 %	350	13 %	605	96 %
158471636507470	Gowtham Kumar	475	52 %	560	80 %	510	67 %	475	32 %
158471636415545	Gowthami L	300	6 %	210	2 %	310	6 %	145	0 %
158471636413344	Gururaj. Nandi	350	14 %	310	10 %	265	2 %	205	0 %
158471636739424	H C Shreya	395	25 %	400	31 %	325	8 %	355	1 %
158471636601661	H K Kumar	420	32 %	340	16 %	370	17 %	595	94 %
158471636053906	Hamsaja J	395	25 %	415	35 %	480	56 %	545	76 %
158471636007169	Harikesh Chandra	230	1 %	165	1 %	385	21 %	145	0 %
158471636152040	Haripriya R	405	28 %	355	19 %	480	56 %	465	26 %
158471636445222	Harish Gs	300	6 %	270	6 %	275	3 %	225	0 %
158471636546171	Harish Patil	245	2 %	225	2 %	250	2 %	215	0 %
158471636421207	Harsh Sharma	650	95 %	445	45 %	530	74 %	525	64 %
158471636100973	Harsha Anil	605	89 %	520	69 %	480	56 %	535	70 %
158471636082877	Harsha K S	455	45 %	430	40 %	410	29 %	245	0 %
158471636234452	Harsha Gowda	455	45 %	300	9 %	420	33 %	265	0 %
158471636987357	Harsha C R	405	28 %	-	-	395	24 %	535	70 %
158471636109676	Harsha S D	490	57 %	300	9 %	420	33 %	545	76 %
158471636609299	Harshavardhan G R	455	45 %	310	10 %	410	29 %	465	26 %
158471636212141	Harshit Chaudhary	490	57 %	460	50 %	285	4 %	535	70 %
158471636116457	Harshita Naik	440	39 %	370	22 %	400	26 %	145	0 %
158471636576661	Harshith Nagaraj	420	32 %	270	6 %	275	3 %	275	0 %
158471636730912	Harshith Dp Harshith Dp	335	11 %	285	7 %	200	0 %	185	0 %
158471636827980	Harshitha S	465	48 %	400	31 %	340	11 %	605	96 %
158471636505196	Harshitha K M	360	16 %	460	50 %	530	74 %	475	32 %
158471636309016	Harshitha M	335	11 %	490	60 %	340	11 %	395	4 %
158471636492230	Harshitha S	455	45 %	300	9 %	400	26 %	525	64 %
158471636026120	Harshitha R	420	32 %	415	35 %	395	24 %	535	70 %
158471636780045	Harshitha.c Harshitha	385	38 %	255	7 %	340	19 %	285	0 %
158471636217252	Harshithab B	405	28 %	310	10 %	360	15 %	625	98 %
158471636254523	Hema Rs	475	52 %	535	73 %	425	35 %	525	64 %
158471636537026	Hemanth G N	500	61 %	240	3 %	445	42 %	605	96 %
158471636588377	Hemanth R	325	9 %	490	60 %	425	35 %	335	0 %
158471636989181	Hemanth Me	465	48 %	590	86 %	375	19 %	455	21 %
158471636415982	Hemanth S	405	28 %	370	22 %	310	6 %	135	0 %
158471636478425	Hemanth K	335	11 %	285	7 %	350	13 %	405	5 %

AMCAT ID	Name	AMCAT Score, Percentile							
		English Comprehension		Quantitative Ability		Logical Ability		Basic IT Applications	
158471636062649	Hitesh R	440	39 %	300	9 %	425	35 %	335	0 %
158471636637543	Hitesh.l L	440	39 %	135	0 %	350	13 %	355	1 %
158471636593599	Hitha Y S	455	45 %	400	31 %	435	38 %	615	97 %
158471636246858	Hithendra T T T T	300	6 %	-	-	400	26 %	205	0 %
158471636460693	Hussainsab Hussainsab	395	25 %	310	10 %	310	6 %	395	4 %
158471636741232	Inchara Karanth	595	87 %	340	16 %	595	90 %	415	7 %
158471636439225	Indrighi Suhas	490	57 %	355	19 %	400	26 %	595	94 %
158471636388501	Indushree Khanar	510	64 %	325	13 %	395	24 %	215	0 %
158471636286065	Issat Kirmani	545	75 %	445	45 %	360	15 %	725	100 %
158471636503694	Jagadeesh M	370	18 %	270	6 %	325	8 %	445	17 %
158471636263515	Jagadish B	280	4 %	-	-	455	46 %	395	4 %
158471636690531	Jahnvi K	490	57 %	475	55 %	420	33 %	535	70 %
158471636733779	Jahnvi A Jahnvi	335	11 %	310	10 %	225	1 %	115	0 %
158471636975677	Jai G	335	11 %	415	35 %	335	10 %	395	4 %
158471636948794	Jayashree V.m	370	18 %	255	4 %	255	2 %	525	64 %
158471636078306	Jayashree S Jaya	280	4 %	325	13 %	200	0 %	255	0 %
158471636476545	Jeevan Gowda	420	32 %	475	55 %	495	62 %	615	97 %
158471636250203	Jeevan S	290	5 %	165	1 %	350	13 %	255	0 %
158471636059291	Jeevan S J	595	87 %	285	7 %	480	56 %	405	5 %
158471636563121	Jeevika Kp	490	57 %	210	2 %	310	6 %	415	7 %
158471636425333	Jigmet Namgail	430	36 %	385	26 %	375	19 %	305	0 %
158471636348442	Johnson Toppo	605	89 %	430	40 %	510	67 %	655	99 %
158471636785295	Junaid Reyaz	265	3 %	505	64 %	400	26 %	465	26 %
158471636314373	Juveriya F	385	22 %	270	6 %	275	3 %	405	5 %
158471636320239	K Priya	350	14 %	385	26 %	425	35 %	555	81 %
158471636381816	Kamala Mohan	385	22 %	385	26 %	435	38 %	335	0 %
158471636031746	Kanchana Km	405	48 %	415	52 %	350	22 %	325	0 %
158471636527870	Karan J	580	84 %	635	93 %	580	87 %	705	100 %
158471636381175	Karthik J	280	4 %	225	2 %	325	8 %	285	0 %
158471636637477	Karthik H S	455	45 %	225	2 %	335	10 %	365	1 %
158471636173428	Karthik T K	385	22 %	400	31 %	425	35 %	455	21 %
158471636083520	Karthik N	360	16 %	255	4 %	275	3 %	345	0 %
158471636106471	Karthik H M	525	69 %	695	97 %	370	17 %	465	26 %
158471636379928	Karthik Raju	605	89 %	460	50 %	485	58 %	865	100 %
158471636282765	Karthik Hegde	535	72 %	400	31 %	530	74 %	495	45 %
158471636389615	Karthik A	315	8 %	310	10 %	350	13 %	135	0 %
158471636597854	Kartik Dandooti	335	11 %	325	13 %	385	21 %	455	21 %
158471636744431	Kavana H	455	45 %	340	16 %	360	15 %	425	10 %
158471636934254	Kavana Padaki	710	99 %	400	31 %	370	17 %	405	5 %
158471636926301	Kavya R	385	22 %	385	26 %	545	79 %	355	1 %
158471636065593	Kavya M K Kavya Mk	420	32 %	270	6 %	385	21 %	345	0 %
158471636451479	Kavya. .	385	22 %	300	9 %	335	10 %	335	0 %
158471636166524	Kavya.h.c. Kavya.h.c.	350	14 %	270	6 %	290	4 %	195	0 %
158471636656324	Kavyashree .r Chinnu	440	39 %	385	26 %	460	48 %	685	100 %
158471636355620	Kavyashree.n Kavyashree.n	510	64 %	270	6 %	300	5 %	565	85 %

AMCAT ID	Name	AMCAT Score, Percentile							
		English Comprehension		Quantitative Ability		Logical Ability		Basic IT Applications	
158471636197477	Keerthana S.c.	430	36 %	340	16 %	360	15 %	395	4 %
158471636495370	Keshav Raj	560	79 %	-	-	455	46 %	735	100 %
158471636290290	Keshav Regmi	475	52 %	310	10 %	470	52 %	465	26 %
158471636749956	Keshava B B	490	57 %	195	1 %	335	10 %	395	4 %
158471636110324	Khadarbasha Khadarbasha	405	28 %	300	9 %	300	5 %	365	1 %
158471636664431	Kiran A	455	45 %	270	6 %	375	19 %	395	4 %
158471636239640	Kiran M	545	75 %	285	7 %	435	38 %	605	96 %
158471636993010	Kishore B S	325	9 %	400	31 %	420	33 %	395	4 %
158471636559887	Kishore Karthikeyan	675	97 %	710	98 %	510	67 %	465	26 %
158471636497634	Kishore Kumar D	290	5 %	-	-	445	42 %	185	0 %
158471636178171	Koruvathi Aishwarya	245	2 %	505	64 %	315	7 %	415	7 %
158471636799779	Kp Venkatesh	430	36 %	430	40 %	310	6 %	665	100 %
158471636933965	Krishna P	675	97 %	680	97 %	460	48 %	735	100 %
158471636557306	Kruthik Gowda	430	36 %	520	69 %	530	74 %	595	94 %
158471636104784	Kruthik B Bhupal	385	22 %	325	13 %	410	29 %	615	97 %
158471636500215	Kumar Vedant	630	93 %	710	98 %	565	84 %	865	100 %
158471636008247	Kumuda D	605	89 %	415	35 %	420	33 %	535	70 %
158471636565885	Kushal Marahatta	685	97 %	605	88 %	595	90 %	405	5 %
158471636285815	Kusuma Sm	405	28 %	225	2 %	385	21 %	255	0 %
158471636339722	Lalana S	420	32 %	240	3 %	400	26 %	295	0 %
158471636333675	Lalrinsanga Renthleil	640	94 %	445	45 %	445	42 %	405	5 %
158471636207971	Lavanya Y N	385	22 %	445	45 %	285	4 %	555	81 %
158471636666450	Lavanya N Lavanya N	280	4 %	385	26 %	385	21 %	205	0 %
158471636454173	Laxman Kuddemmi	490	57 %	490	60 %	385	21 %	605	96 %
158471636294872	Lehara Shaikh	455	45 %	325	13 %	435	38 %	405	5 %
158471636661991	Lekha R	535	72 %	430	40 %	520	71 %	475	32 %
158471636320355	Likhith Kumar	430	36 %	325	13 %	445	42 %	445	17 %
158471636804052	Likhith K	535	72 %	400	31 %	460	48 %	485	38 %
158471636211484	Likhitha.t T	385	22 %	150	0 %	250	2 %	435	13 %
158471636654964	Likith Gowda Gm Gowda Gm	325	9 %	460	50 %	400	26 %	405	5 %
158471636190908	Likitha R	325	9 %	255	4 %	325	8 %	435	13 %
158471636930867	Lipika Krishna	510	64 %	370	22 %	410	29 %	465	26 %
158471636405239	Madhu Agni	430	36 %	430	40 %	480	56 %	335	0 %
158471636343500	Madhu S	430	36 %	505	64 %	375	19 %	595	94 %
158471636385102	Madhu C	500	61 %	430	40 %	485	58 %	595	94 %
158471636471654	Mahaboob Momin	360	16 %	270	6 %	400	26 %	355	1 %
158471636739087	Mahalakshmi.c.d C.d	465	48 %	475	55 %	290	4 %	475	32 %
158471636085750	Mahesh S R	455	45 %	355	19 %	310	6 %	605	96 %
158471636424595	Mahesh N	405	28 %	255	4 %	335	10 %	595	94 %
158471636894640	Mahesh M S M S	300	6 %	285	7 %	360	15 %	385	2 %
158471636182409	Maheshwari Khelge	500	61 %	430	40 %	520	71 %	285	0 %
158471636956598	Manasa.m.a Manasa.m.a	335	11 %	285	7 %	360	15 %	405	5 %
158471636513096	Manasi Badiger	535	72 %	270	6 %	255	2 %	405	5 %
158471636425360	Manaswini.b.m Manaswini.b.m	510	64 %	430	40 %	435	38 %	395	4 %

AMCAT ID	Name	AMCAT Score, Percentile							
		English Comprehension		Quantitative Ability		Logical Ability		Basic IT Applications	
158471636326333	Mangalamma.m Mallehappa	280	4 %	270	6 %	225	1 %	325	0 %
158471636239817	Manisha Shetty	615	91 %	240	3 %	410	29 %	405	5 %
158471636303570	Manisha A S	475	52 %	370	22 %	350	13 %	345	0 %
158471636969492	Manju N	430	36 %	285	7 %	340	11 %	595	94 %
158471636889576	Manjunath Ganer	395	25 %	225	2 %	290	4 %	335	0 %
158471636311279	Manoj G S	500	61 %	445	45 %	565	84 %	525	64 %
158471636461008	Manoj H B	370	18 %	225	2 %	375	19 %	475	32 %
158471636980339	Manoj Devadiga	335	11 %	165	1 %	335	10 %	345	0 %
158471636606505	Manoj Kumar Kn Manu	500	61 %	285	7 %	255	2 %	395	4 %
158471636273817	Manoj Kumar M Kumar	455	45 %	325	13 %	275	3 %	345	0 %
158471636606900	Manojna S S	395	25 %	430	40 %	370	17 %	535	70 %
158471636393311	Mansi Srinivas	650	95 %	520	69 %	435	38 %	675	100 %
158471636431716	Mansi D	455	45 %	240	3 %	455	46 %	795	100 %
158471636107726	Manu B Manu B	370	18 %	285	7 %	480	56 %	335	0 %
158471636087479	Manu D M Manu D M	405	28 %	340	16 %	360	15 %	125	0 %
158471636974378	Manu G U	325	9 %	310	10 %	325	8 %	225	0 %
158471636886224	Md Shreyas	500	61 %	725	99 %	410	29 %	605	96 %
158471636893532	Md Mustafa Mdmustafa	405	28 %	340	16 %	310	6 %	315	0 %
158471636360830	Medhini Sampemane	475	52 %	385	26 %	425	35 %	545	76 %
158471636451643	Meenakshi Raju	535	72 %	430	40 %	480	56 %	675	100 %
158471636136814	Meera M	430	36 %	400	31 %	445	42 %	605	96 %
158471636634633	Megha R B	430	36 %	300	9 %	400	26 %	395	4 %
158471636808805	Meghana Balram	350	14 %	225	2 %	315	7 %	475	32 %
158471636293430	Meghana M	385	22 %	270	6 %	435	38 %	325	0 %
158471636268789	Meghavardhana C	465	48 %	560	80 %	590	89 %	615	97 %
158471636733231	Mohammad Rooh Ullah	570	82 %	415	35 %	470	52 %	575	88 %
158471636771934	Mohammad Aqib Pathan	360	16 %	460	50 %	460	48 %	525	64 %
158471636453840	Mohammed Ibaad	500	61 %	370	22 %	455	46 %	455	21 %
158471636420318	Mohammed Ibrahim	360	16 %	255	4 %	315	7 %	335	0 %
158471636546313	Mohammed Misal	430	36 %	240	3 %	325	8 %	335	0 %
158471636891659	Mohan Gowda	615	91 %	460	50 %	480	56 %	475	32 %
158471636965733	Mohan Karuturi	405	28 %	415	35 %	310	6 %	535	70 %
158471636680850	Mohan L S Mona	430	36 %	325	13 %	310	6 %	355	1 %
158471636066698	Mohankumar A B A B	385	22 %	255	4 %	340	11 %	195	0 %
158471636854022	Mohit S	615	91 %	755	99 %	545	79 %	715	100 %
158471636904993	Monika Kumari	490	57 %	-	-	-	-	565	85 %
158471636118211	Monika B	300	6 %	310	10 %	350	13 %	335	0 %
158471636532272	Monika Monika	335	11 %	255	4 %	420	33 %	255	0 %
158471636946259	Monika Kumari	465	48 %	475	55 %	470	52 %	545	76 %
158471636584583	Monisha H	560	79 %	400	31 %	460	48 %	605	96 %
158471636548674	Monisha G Gangraju M R	510	64 %	-	-	370	17 %	615	97 %
158471636719047	Mounesha M M	360	16 %	325	13 %	400	26 %	405	5 %
158471636954940	Mounith Reddy	535	72 %	550	77 %	420	33 %	455	21 %
158471636258587	Mp Neha Mp Neha	370	18 %	310	10 %	410	29 %	535	70 %
158471636644966	Muhammed Shakeer	300	6 %	325	13 %	310	6 %	415	7 %

AMCAT ID	Name	AMCAT Score, Percentile							
		English Comprehension		Quantitative Ability		Logical Ability		Basic IT Applications	
158471636575203	Mujahid Khan	360	16 %	225	2 %	250	2 %	475	32 %
158471636204199	Murali K R	405	28 %	475	55 %	370	17 %	405	5 %
158471636401291	Muskan Sultana	475	52 %	355	19 %	425	35 %	535	70 %
158471636012144	Mutturaj Pujar	265	3 %	300	9 %	385	21 %	165	0 %
158471636176144	N Dheeraj Reddy	525	69 %	605	88 %	520	71 %	685	100 %
158471636546377	N G Suhan Nayak	500	61 %	385	26 %	400	26 %	355	1 %
158471636946138	Nagaraj M S	325	9 %	385	26 %	480	56 %	495	45 %
158471636900355	Nagesh Harpalle	490	57 %	400	31 %	325	8 %	345	0 %
158471636445364	Nakshith S	580	84 %	460	50 %	335	10 %	335	0 %
158471636270662	Namratha B P	440	39 %	355	19 %	350	13 %	535	70 %
158471636245558	Namratha D	335	11 %	430	40 %	385	21 %	275	0 %
158471636624696	Namratha S B S B	370	18 %	165	1 %	275	3 %	335	0 %
158471636761466	Nandan Bantwal	510	64 %	270	6 %	300	5 %	345	0 %
158471636220797	Nandeesh K V	535	72 %	475	55 %	425	35 %	265	0 %
158471636295769	Nanditha.a Nandiha.a	395	25 %	225	2 %	420	33 %	335	0 %
158471636936725	Naresh Reddy	370	18 %	370	22 %	410	29 %	395	4 %
158471636417268	Naveen G	535	72 %	505	64 %	400	26 %	335	0 %
158471636495996	Navyashree. S	490	57 %	255	4 %	335	10 %	395	4 %
158471636792021	Nawraj Pandey	605	89 %	400	31 %	395	24 %	475	32 %
158471636134626	Nayana S	500	61 %	430	40 %	470	52 %	535	70 %
158471636754321	Nayana M Nayana M	420	32 %	355	19 %	435	38 %	335	0 %
158471636567649	Neekshith Reddy	440	39 %	430	40 %	495	62 %	345	0 %
158471636371532	Neha Ms	440	39 %	300	9 %	420	33 %	395	4 %
158471636787401	Neha Zutti	490	57 %	415	35 %	455	46 %	475	32 %
158471636319211	Neha M	525	69 %	490	60 %	435	38 %	605	96 %
158471636222767	Nidhi S R	535	72 %	325	13 %	485	58 %	475	32 %
158471636615771	Nidhi Raikar	640	94 %	430	40 %	485	58 %	415	7 %
158471636079967	Niharika Kiran	650	95 %	475	55 %	530	74 %	555	81 %
158471636629835	Nikhil S M	335	11 %	400	31 %	360	15 %	535	70 %
158471636869157	Niranjan Bhat	700	98 %	445	45 %	505	65 %	475	32 %
158471636088971	Nisarga .gp	325	9 %	240	3 %	285	4 %	485	38 %
158471636613981	Nisarga R	465	48 %	590	86 %	510	67 %	275	0 %
158471636989652	Nisarga.p Nisarga.p	385	22 %	355	19 %	455	46 %	475	32 %
158471636847909	Nischitha G	465	48 %	400	31 %	410	29 %	535	70 %
158471636732517	Nishal K	535	72 %	165	1 %	340	11 %	655	99 %
158471636780350	Nishanth Suragonda	395	25 %	255	4 %	315	7 %	155	0 %
158471636804067	Nishanth S	650	95 %	475	55 %	435	38 %	485	38 %
158471636092603	Nishanth Reddy	545	75 %	430	40 %	420	33 %	355	1 %
158471636798515	Nishmitha C	430	36 %	415	35 %	385	21 %	405	5 %
158471636944049	Nithin G	440	39 %	415	35 %	420	33 %	335	0 %
158471636653171	Nithin Bm	315	8 %	445	45 %	350	13 %	595	94 %
158471636254616	Nithish J	465	48 %	430	40 %	400	26 %	405	5 %
158471636703310	Nithyashree S A S A	475	52 %	535	73 %	350	13 %	495	45 %
158471636716466	Nitin K	545	75 %	430	40 %	565	84 %	665	100 %
158471636617178	Nitin N	395	25 %	535	73 %	395	24 %	215	0 %
158471636930590	Nm Siddharth	595	87 %	255	4 %	470	52 %	475	32 %

AMCAT ID	Name	AMCAT Score, Percentile							
		English Comprehension		Quantitative Ability		Logical Ability		Basic IT Applications	
158471636051008	Nnjundaswamy Hh H M	395	25 %	430	40 %	530	74 %	335	0 %
158471636781188	Om Y C	420	32 %	285	7 %	350	13 %	315	0 %
158471636437448	Omkarswami Murujawadmath	605	89 %	-	-	460	48 %	605	96 %
158471636997450	Padmashree A Padmashree A	300	6 %	325	13 %	470	52 %	165	0 %
158471636584782	Pallavi D P	335	11 %	255	4 %	420	33 %	475	32 %
158471636988240	Pallavi S	465	48 %	-	-	-	-	395	4 %
158471636291337	Pallavi B.n	350	14 %	285	7 %	300	5 %	295	0 %
158471636719340	Pallavi .m.s Pallavi.m.s	395	25 %	225	2 %	310	6 %	155	0 %
158471636422133	Paramanand Nandagiri	395	25 %	355	19 %	230	1 %	215	0 %
158471636539461	Parashuram R	385	22 %	605	88 %	315	7 %	395	4 %
158471636370443	Parikshith J	545	75 %	725	99 %	570	85 %	465	26 %
158471636708508	Pavan Gr	455	45 %	355	19 %	425	35 %	465	26 %
158471636077988	Pavan S Pavans	280	4 %	415	35 %	265	2 %	355	1 %
158471636172976	Pavani M R Pavani	405	28 %	135	0 %	480	56 %	405	5 %
158471636264465	Pavankalyan Pavankalyan	465	48 %	325	13 %	325	8 %	395	4 %
158471636247374	Pavithra S	360	16 %	400	31 %	385	21 %	405	5 %
158471636083293	Pavithra N	335	11 %	385	26 %	300	5 %	100	0 %
158471636579821	Pavithra Tg Pavi	420	32 %	165	1 %	230	1 %	255	0 %
158471636629285	Piyusha Cp	500	61 %	310	10 %	375	19 %	355	1 %
158471636904266	Pooja H.b	335	11 %	385	26 %	410	29 %	335	0 %
158471636353155	Poojitha.sp Sathya Prakash.nk	545	75 %	385	26 %	400	26 %	655	99 %
158471636333260	Poornima M P Bindu	220	1 %	180	1 %	375	19 %	325	0 %
158471636146516	Pradeep Halemani	525	69 %	605	88 %	540	77 %	485	38 %
158471636359336	Pragna M M	525	69 %	340	16 %	435	38 %	335	0 %
158471636271956	Prajath Shetty	580	84 %	415	35 %	485	58 %	415	7 %
158471636396817	Prajwal G	595	87 %	590	86 %	530	74 %	385	2 %
158471636646128	Prajwal Patil	220	1 %	300	9 %	265	2 %	285	0 %
158471636270745	Prajwal A	350	14 %	270	6 %	395	24 %	365	1 %
158471636270126	Prajwal P	640	94 %	575	83 %	505	65 %	535	70 %
158471636454388	Prajwal Nayak	325	9 %	240	3 %	300	5 %	205	0 %
158471636593301	Prajwal R	560	79 %	400	31 %	445	42 %	475	32 %
158471636542278	Prajwal Gm Prajwal	350	14 %	300	9 %	375	19 %	325	0 %
158471636844998	Prakash S Rathod	325	9 %	-	-	375	19 %	505	51 %
158471636057430	Prakruthi C	605	89 %	475	55 %	480	56 %	375	2 %
158471636804552	Prakruthi D	490	57 %	400	31 %	395	24 %	675	100 %
158471636517571	Pramoda M N Pramodh M N	315	8 %	310	10 %	395	24 %	265	0 %
158471636702998	Pranav P	545	75 %	475	55 %	335	10 %	465	26 %
158471636798564	Pranav Mandewalkar	510	64 %	285	7 %	370	17 %	675	100 %
158471636432609	Pranay N	510	64 %	355	19 %	385	21 %	725	100 %
158471636753205	Pranoy Kv	455	45 %	325	13 %	420	33 %	345	0 %
158471636064362	Prasad Jakkali	490	57 %	285	7 %	375	19 %	275	0 %
158471636391764	Prashanth S	245	2 %	180	1 %	265	2 %	275	0 %
158471636562672	Prashanth R	300	6 %	270	6 %	310	6 %	205	0 %

AMCAT ID	Name	AMCAT Score, Percentile							
		English Comprehension		Quantitative Ability		Logical Ability		Basic IT Applications	
158471636891868	Prashanth T S	395	25 %	355	19 %	470	52 %	535	70 %
158471636021354	Prashanth T V	280	4 %	370	22 %	315	7 %	275	0 %
158471636738522	Prashanth Gouda S Gouda	315	8 %	300	9 %	285	4 %	275	0 %
158471636727645	Prashanth.g.m G.m	430	36 %	445	45 %	370	17 %	275	0 %
158471636777916	Prashantraaj Raj	370	18 %	505	64 %	310	6 %	325	0 %
158471636723387	Prathamesh Patil	430	36 %	520	69 %	480	56 %	695	100 %
158471636249636	Prathap M S	335	11 %	355	19 %	385	21 %	285	0 %
158471636738004	Pratheek.banagar Banagar	525	69 %	490	60 %	375	19 %	665	100 %
158471636867073	Prathibha B	440	39 %	285	7 %	420	33 %	525	64 %
158471636385522	Pratish Suryawanshi	405	28 %	270	6 %	335	10 %	275	0 %
158471636727634	Praveen Megharaj	510	64 %	385	26 %	470	52 %	525	64 %
158471636212615	Preetham K	710	99 %	680	97 %	510	67 %	455	21 %
158471636402137	Preetham Pagad	500	61 %	490	60 %	360	15 %	475	32 %
158471636935237	Prema Prema	440	39 %	270	6 %	370	17 %	535	70 %
158471636353189	Prerana N.raj	440	39 %	210	2 %	340	11 %	485	38 %
158471636032461	Prerana Rao	615	91 %	325	13 %	400	26 %	475	32 %
158471636087719	Prerana V	595	87 %	400	31 %	385	21 %	535	70 %
158471636865694	Prishu Pandey	500	61 %	460	50 %	495	62 %	355	1 %
158471636836391	Priyanka J Priyanka J	335	11 %	355	19 %	395	24 %	305	0 %
158471636980736	Priyanka.v Venkatesh	475	52 %	325	13 %	445	42 %	535	70 %
158471636562879	Priyanshu Kumar	570	82 %	635	93 %	350	13 %	535	70 %
158471636327158	Priyash Kumar	595	87 %	560	80 %	530	74 %	525	64 %
158471636861517	Puneeth A	370	18 %	285	7 %	375	19 %	205	0 %
158471636198247	Puneeth N	475	52 %	-	-	375	19 %	525	64 %
158471636383893	Puneeth Kumar	360	16 %	180	1 %	290	4 %	245	0 %
158471636981402	Puneeth.u U	430	36 %	490	60 %	420	33 %	525	64 %
158471636219399	Punith Aditya	350	14 %	150	0 %	335	10 %	395	4 %
158471636174642	Punith Hn	325	9 %	255	4 %	315	7 %	395	4 %
158471636181653	Puttaraju N Puttaraju N	325	9 %	255	4 %	395	24 %	355	1 %
158471636372125	R. Gowtham	290	5 %	165	1 %	310	6 %	355	1 %
158471636981059	R.huligemma Huligemma R	255	3 %	300	9 %	-	-	265	0 %
158471636696659	Raghavendra Raghavendra	335	11 %	325	13 %	385	21 %	395	4 %
158471636829546	Rahul Hanumanji	440	39 %	445	45 %	420	33 %	405	5 %
158471636610129	Rahul A	510	64 %	460	50 %	395	24 %	565	85 %
158471636750447	Rahul Mv	405	28 %	355	19 %	300	5 %	275	0 %
158471636591349	Rahul R	290	5 %	300	9 %	300	5 %	195	0 %
158471636238374	Rahul Raju	650	95 %	475	55 %	400	26 %	585	91 %
158471636963954	Rahul N.m	665	96 %	430	40 %	470	52 %	665	100 %
158471636739594	Rahul Sharma	360	16 %	505	64 %	395	24 %	485	38 %
158471636893824	Rajalakshmi Nagaraju	395	25 %	210	2 %	410	29 %	335	0 %
158471636093938	Rajeev Hp Rajeev Hp	455	45 %	225	2 %	400	26 %	395	4 %
158471636034414	Rajkumar Patil	360	16 %	340	16 %	370	17 %	255	0 %
158471636558132	Raju U	335	11 %	225	2 %	315	7 %	195	0 %

AMCAT ID	Name	AMCAT Score, Percentile							
		English Comprehension		Quantitative Ability		Logical Ability		Basic IT Applications	
158471636788306	Rakesh K	455	45 %	-	-	385	21 %	465	26 %
158471636055836	Rakesh Rathod	370	18 %	300	9 %	315	7 %	165	0 %
158471636645431	Rakesh Gowda	405	28 %	445	45 %	510	67 %	605	96 %
158471636723448	Rakesh S	525	69 %	430	40 %	460	48 %	595	94 %
158471636163975	Rakesha Raki	430	36 %	370	22 %	350	13 %	535	70 %
158471636903435	Rakshan Kr	510	64 %	415	35 %	435	38 %	525	64 %
158471636340171	Rakshith Y S	440	39 %	340	16 %	375	19 %	325	0 %
158471636317525	Rakshith P D Rakshith P D	570	82 %	460	50 %	410	29 %	265	0 %
158471636703272	Rakshith Patel Rakshith Patel	405	28 %	300	9 %	480	56 %	545	76 %
158471636558092	Rakshith.s Srinivasaiah	315	8 %	210	2 %	315	7 %	415	7 %
158471636131278	Rakshitha B	580	84 %	370	22 %	485	58 %	605	96 %
158471636368217	Rakshitha Rakshitha	395	25 %	325	13 %	340	11 %	265	0 %
158471636203317	Rakshitha K Rakshitha K	580	84 %	385	26 %	445	42 %	465	26 %
158471636093770	Ramesh D	370	18 %	400	31 %	325	8 %	635	99 %
158471636520340	Ramesh C	335	11 %	195	1 %	230	1 %	475	32 %
158471636569564	Rammuanpuia Chhakchhuak	525	69 %	475	55 %	520	71 %	715	100 %
158471636628746	Ramya R	385	22 %	415	35 %	310	6 %	335	0 %
158471636093208	Ramya R V R V	325	9 %	135	0 %	410	29 %	335	0 %
158471636066137	Ramya.c C	420	32 %	225	2 %	335	10 %	265	0 %
158471636732065	Randheer Kumar	615	91 %	560	80 %	410	29 %	655	99 %
158471636306193	Ranganatha R	335	11 %	340	16 %	325	8 %	335	0 %
158471636402816	Ranjita Hegde	430	36 %	270	6 %	420	33 %	335	0 %
158471636694082	Ranjitha H J	430	36 %	445	45 %	470	52 %	745	100 %
158471636080557	Rantadev Purohit	475	52 %	475	55 %	470	52 %	465	26 %
158471636377765	Rashmi R	525	69 %	415	35 %	420	33 %	455	21 %
158471636021248	Rashmi Mn	455	45 %	340	16 %	400	26 %	525	64 %
158471636101777	Raveena Hebbar	535	72 %	575	83 %	350	13 %	665	100 %
158471636322497	Ravi S	490	57 %	355	19 %	520	71 %	615	97 %
158471636406142	Ravi Kiran.s	385	22 %	300	9 %	410	29 %	415	7 %
158471636650161	Rebecca Pachua	395	25 %	415	35 %	325	8 %	555	81 %
158471636667005	Renukesh Hp Hp	370	18 %	135	0 %	250	2 %	325	0 %
158471636851563	Reshma C H	615	91 %	575	83 %	545	79 %	535	70 %
158471636946812	Richa Sharma	545	75 %	310	10 %	495	62 %	855	100 %
158471636738825	Rishabh Rathore	475	52 %	650	94 %	385	21 %	745	100 %
158471636048776	Rithvik K	500	61 %	210	2 %	375	19 %	535	70 %
158471636371271	Riya Thyagaraj	360	16 %	620	91 %	420	33 %	525	64 %
158471636020402	Riya Shree	580	84 %	550	77 %	565	84 %	735	100 %
158471636428454	Rohan A V	640	94 %	560	80 %	480	56 %	605	96 %
158471636668238	Rohit Raman	570	82 %	445	45 %	460	48 %	595	94 %
158471636852135	Rohit Aourade Aourade	405	28 %	180	1 %	315	7 %	415	7 %
158471636237740	Rohith Patil	465	48 %	385	26 %	340	11 %	525	64 %
158471636653535	Rohith K	395	25 %	340	16 %	425	35 %	355	1 %
158471636676186	Roja K S	440	39 %	505	64 %	370	17 %	605	96 %
158471636358026	Roland Zohmingthana	650	95 %	430	40 %	480	56 %	665	100 %

AMCAT ID	Name	AMCAT Score, Percentile							
		English Comprehension		Quantitative Ability		Logical Ability		Basic IT Applications	
158471636928612	Roopa Desai	360	16 %	105	0 %	350	13 %	100	0 %
158471636294305	Rose Paw	475	52 %	165	1 %	335	10 %	265	0 %
158471636625105	Roshan M	290	5 %	340	16 %	360	15 %	325	0 %
158471636088651	Ruchita Lingaraju	510	64 %	310	10 %	420	33 %	525	64 %
158471636596023	Ruchitha Bp	420	32 %	370	22 %	325	8 %	405	5 %
158471636927227	Ruchitha B	475	52 %	340	16 %	425	35 %	735	100 %
158471636782274	Rushab Santhosh	650	95 %	355	19 %	470	52 %	535	70 %
158471636296888	S G Gopi Naik Gopi	245	2 %	270	6 %	410	29 %	265	0 %
158471636800609	S.I. Karthik Hegde	500	61 %	460	50 %	480	56 %	655	99 %
158471636961787	S.sandeep S.sandeep	455	45 %	310	10 %	335	10 %	305	0 %
158471636471625	Sachin Patil	560	79 %	370	22 %	310	6 %	515	58 %
158471636699437	Sachin V H	280	4 %	340	16 %	290	4 %	275	0 %
158471636386737	Sachin G O Sachhu	290	5 %	225	2 %	290	4 %	100	0 %
158471636898568	Sachin Gowda Ks Ninegowda	440	39 %	255	4 %	340	11 %	215	0 %
158471636767870	Sahana C	580	84 %	550	77 %	435	38 %	485	38 %
158471636911810	Sahana A N	510	64 %	415	35 %	395	24 %	465	26 %
158471636680704	Sahana Veeraghanti	420	32 %	475	55 %	480	56 %	605	96 %
158471636171422	Sahana K S Sahana K S	440	39 %	445	45 %	470	52 %	275	0 %
158471636046372	Sahana .p Prakash	405	28 %	180	1 %	360	15 %	485	38 %
158471636599737	Sahana N S Sahana N S	370	18 %	285	7 %	335	10 %	335	0 %
158471636586310	Sahas V G	465	48 %	270	6 %	255	2 %	665	100 %
158471636454803	Sahil Mohammed	475	52 %	590	86 %	410	29 %	475	32 %
158471636107727	Sambhav Gyawali	535	72 %	445	45 %	420	33 %	425	10 %
158471636301943	Sameer Ahmed Sameer	290	5 %	210	2 %	315	7 %	395	4 %
158471636004389	Samip Pokhrel	395	25 %	225	2 %	470	52 %	405	5 %
158471636229467	Samuel Sailo	465	48 %	385	26 %	425	35 %	355	1 %
158471636771378	Sanath M	500	61 %	520	69 %	425	35 %	525	64 %
158471636945782	Sandeep Kumar	370	18 %	490	60 %	335	10 %	595	94 %
158471636810600	Sandesh Puranik	405	28 %	210	2 %	325	8 %	475	32 %
158471636360558	Sanghamitra Raha	535	72 %	300	9 %	470	52 %	275	0 %
158471636271162	Sanjana Chandrashekar	385	22 %	415	35 %	395	24 %	425	10 %
158471636317878	Sanjay K	315	8 %	475	55 %	510	67 %	595	94 %
158471636562382	Sanjay G	290	5 %	300	9 %	310	6 %	425	10 %
158471636403605	Sanjay Sunar	405	28 %	310	10 %	400	26 %	485	38 %
158471636014501	Sanjay V	325	9 %	560	80 %	350	13 %	615	97 %
158471636334890	Sanketh Bhavikatti	525	69 %	520	69 %	485	58 %	595	94 %
158471636530464	Santhosh Bc	615	91 %	475	55 %	470	52 %	535	70 %
158471636551931	Santhosh. T Kudure	230	1 %	270	6 %	335	10 %	345	0 %
158471636334918	Santosh Yadav	405	28 %	165	1 %	425	35 %	525	64 %
158471636497895	Sarthak Honkhande	535	72 %	210	2 %	435	38 %	655	99 %
158471636094981	Satish C H	360	16 %	400	31 %	310	6 %	245	0 %
158471636137143	Saugat Subedi	455	45 %	225	2 %	340	11 %	545	76 %
158471636785629	Sawan Kumar	255	3 %	300	9 %	310	6 %	255	0 %
158471636369217	Sh Ha. V	385	22 %	385	26 %	410	29 %	725	100 %
158471636167093	Sharan B G	605	89 %	650	94 %	425	35 %	715	100 %

AMCAT ID	Name	AMCAT Score, Percentile							
		English Comprehension		Quantitative Ability		Logical Ability		Basic IT Applications	
158471636564169	Sharath N S	395	25 %	460	50 %	340	11 %	215	0 %
158471636838971	Shashank K V	535	72 %	650	94 %	510	67 %	535	70 %
158471636725629	Shashank Gaikwad	360	16 %	370	22 %	400	26 %	545	76 %
158471636024968	Shashank N	580	84 %	590	86 %	480	56 %	395	4 %
158471636412373	Shashank Warikalomath	300	6 %	415	35 %	375	19 %	205	0 %
158471636883557	Shetty Amarnath	560	79 %	385	26 %	460	48 %	395	4 %
158471636800174	Shilpa K	405	28 %	340	16 %	445	42 %	275	0 %
158471636635852	Shilpa M Shilpa M	360	16 %	300	9 %	315	7 %	195	0 %
158471636137279	Shirisha A S Shirisha A S	335	11 %	300	9 %	410	29 %	205	0 %
158471636121937	Shivakumar Tanakedar	430	36 %	400	31 %	470	52 %	465	26 %
158471636527591	Shivakumar M.v	455	45 %	355	19 %	315	7 %	455	21 %
158471636512181	Shivakumara P D	350	14 %	225	2 %	250	2 %	325	0 %
158471636586581	Shivam Dubey	685	97 %	635	93 %	510	67 %	475	32 %
158471636320654	Shivamani K A K A	510	64 %	300	9 %	400	26 %	535	70 %
158471636551909	Shivanand Bulla	350	14 %	225	2 %	300	5 %	345	0 %
158471636641420	Shivananda Gs Nanda Gs	465	48 %	460	50 %	370	17 %	175	0 %
158471636474744	Shivani S	570	82 %	430	40 %	420	33 %	605	96 %
158471636057718	Shivaprasad K T	350	14 %	300	9 %	290	4 %	185	0 %
158471636733917	Shivaraj S P Shivaraj S P	280	4 %	270	6 %	310	6 %	345	0 %
158471636201993	Shivendra Ajawan	465	48 %	415	35 %	-	-	395	4 %
158471636242335	Shivprasad Biradar	370	18 %	415	35 %	335	10 %	100	0 %
158471636828805	Shoab Ismail	535	72 %	225	2 %	375	19 %	725	100 %
158471636692808	Shraavana S Saravu	405	28 %	300	9 %	400	26 %	405	5 %
158471636676602	Shreekumar Chathra	455	45 %	270	6 %	370	17 %	325	0 %
158471636948944	Shreevidhya S	615	91 %	445	45 %	485	58 %	715	100 %
158471636397112	Shreya Patil	440	39 %	225	2 %	385	21 %	255	0 %
158471636864810	Shreya B G	560	79 %	415	35 %	370	17 %	535	70 %
158471636559868	Shreya Shree	510	64 %	520	69 %	485	58 %	545	76 %
158471636195849	Shreya Bhat	650	95 %	560	80 %	445	42 %	605	96 %
158471636150639	Shreya. C	440	39 %	400	31 %	420	33 %	475	32 %
158471636035404	Shreyas B.s.	440	39 %	300	9 %	335	10 %	615	97 %
158471636541245	Shreyas S	405	28 %	310	10 %	285	4 %	485	38 %
158471636459792	Shrunya.y.g G	395	25 %	240	3 %	325	8 %	275	0 %
158471636664209	Shruti Awasthi	455	45 %	415	35 %	590	89 %	665	100 %
158471636258445	Shubha S	405	28 %	370	22 %	255	2 %	255	0 %
158471636880082	Shubhada Bn	475	52 %	310	10 %	385	21 %	525	64 %
158471636592475	Shubhakar Sanjeeev	675	97 %	560	80 %	460	48 %	865	100 %
158471636106936	Shubham Saras	430	36 %	445	45 %	460	48 %	595	94 %
158471636576208	Shubhang Raichur	430	36 %	355	19 %	420	33 %	555	81 %
158471636159469	Siddesh G M Siddesh G M	360	16 %	430	40 %	445	42 %	465	26 %
158471636455063	Siddesh R V Siddesh R V	315	8 %	255	4 %	425	35 %	165	0 %
158471636486644	Simrana Banu	510	64 %	385	26 %	375	19 %	405	5 %
158471636057921	Sinchana Nk Sinchana Nk	395	25 %	210	2 %	335	10 %	675	100 %
158471636517827	Sirisha .d.r Sirisha .d.r	535	72 %	385	26 %	370	17 %	355	1 %
158471636042315	Sirisha Sn Siri	385	22 %	310	10 %	300	5 %	135	0 %
158471636796780	Sneha G K	370	18 %	-	-	425	35 %	525	64 %

AMCAT ID	Name	AMCAT Score, Percentile							
		English Comprehension		Quantitative Ability		Logical Ability		Basic IT Applications	
158471636531568	Sneha Vijapur	430	36 %	560	80 %	340	11 %	385	2 %
158471636645929	Sneha P Sneha P	455	45 %	150	0 %	420	33 %	475	32 %
158471636043228	Sneha.. G.r.	315	8 %	575	83 %	410	29 %	285	0 %
158471636922808	Somshekhar K	-	-	355	19 %	350	13 %	175	0 %
158471636860630	Sonal Saldanha	650	95 %	520	69 %	485	58 %	605	96 %
158471636171738	Sonal Kabadi	675	97 %	-	-	570	85 %	675	100 %
158471636778077	Soukhya Hegde	665	96 %	575	83 %	520	71 %	535	70 %
158471636356220	Sourav Thapa	395	25 %	560	80 %	505	65 %	355	1 %
158471636889336	Sowmya Y	405	28 %	475	55 %	420	33 %	100	0 %
158471636189446	Sparsh Jaipuriyar	535	72 %	325	13 %	325	8 %	335	0 %
158471636247447	Spoorthi S Spoorthi	350	14 %	240	3 %	230	1 %	525	64 %
158471636899310	Spoorthy H G	570	82 %	240	3 %	410	29 %	395	4 %
158471636956985	Sri Vaishnavi Dokku Dokku	420	32 %	535	73 %	420	33 %	475	32 %
158471636223044	Srihari Bn Srihari Bn	350	14 %	255	4 %	325	8 %	605	96 %
158471636016257	Srikrutha U	430	36 %	325	13 %	360	15 %	455	21 %
158471636015281	Srilakshmi Kulkarni	490	57 %	505	64 %	540	77 %	595	94 %
158471636738474	Srinivas Gowda D	405	28 %	385	26 %	445	42 %	155	0 %
158471636440731	Srusti Joshi	735	99 %	445	45 %	460	48 %	475	32 %
158471636470988	Sudarshan K.s	500	61 %	550	77 %	510	67 %	605	96 %
158471636461740	Sudarshan Hegde	465	48 %	300	9 %	445	42 %	100	0 %
158471636289347	Sudarshan Adiga	395	25 %	385	26 %	385	21 %	355	1 %
158471636458371	Sudeep. B.m.	510	64 %	285	7 %	455	46 %	605	96 %
158471636843609	Sujay Sridhar	675	97 %	635	93 %	445	42 %	525	64 %
158471636551341	Sujeevi C A	535	72 %	490	60 %	455	46 %	555	81 %
158471636869884	Sukanya K	465	48 %	340	16 %	485	58 %	625	98 %
158471636572051	Sulav Adhikari	405	28 %	225	2 %	410	29 %	205	0 %
158471636612303	Suliman Bhat	490	57 %	210	2 %	375	19 %	465	26 %
158471636586678	Sumanth H S	465	48 %	325	13 %	420	33 %	475	32 %
158471636671602	Sumanth M N	405	28 %	475	55 %	400	26 %	615	97 %
158471636854831	Sumanth K	440	39 %	430	40 %	480	56 %	555	81 %
158471636490270	Sumanth R	280	4 %	300	9 %	340	11 %	595	94 %
158471636411427	Sumanthgowda T N	430	36 %	310	10 %	480	56 %	295	0 %
158471636420614	Sumukha Sharma	465	48 %	505	64 %	410	29 %	665	100 %
158471636417057	Suparna Bk Suparna Bk	510	64 %	135	0 %	420	33 %	265	0 %
158471636098459	Supreet Pradhan	605	89 %	590	86 %	510	67 %	665	100 %
158471636942694	Supreet Hegde	370	18 %	285	7 %	400	26 %	405	5 %
158471636707237	Suraj S	595	87 %	520	69 %	435	38 %	765	100 %
158471636483426	Suraj Belbase	580	84 %	370	22 %	480	56 %	605	96 %
158471636804613	Suraj Pandey	525	69 %	460	50 %	385	21 %	725	100 %
158471636284726	Suraj P	455	45 %	325	13 %	470	52 %	655	99 %
158471636583114	Suresh S	440	39 %	550	77 %	435	38 %	605	96 %
158471636721245	Suresha Nayak	370	18 %	285	7 %	315	7 %	245	0 %
158471636848898	Sushma Hegde Hegde	385	22 %	355	19 %	395	24 %	595	94 %
158471636775792	Sushmitha M G	640	94 %	460	50 %	470	52 %	605	96 %
158471636883254	Sushmitha A	420	32 %	415	35 %	385	21 %	675	100 %

AMCAT ID	Name	AMCAT Score, Percentile							
		English Comprehension		Quantitative Ability		Logical Ability		Basic IT Applications	
158471636372450	Sushmitha D S	280	4 %	225	2 %	370	17 %	285	0 %
158471636363330	Sushmitha C M C M	440	39 %	270	6 %	455	46 %	305	0 %
158471636086253	Sushmitha Priyanka R.s Priyanka	360	16 %	210	2 %	310	6 %	195	0 %
158471636308071	Suyel Suyel	315	8 %	370	22 %	335	10 %	395	4 %
158471636093300	Swapna S.n	325	9 %	195	1 %	370	17 %	325	0 %
158471636918289	Swaroop.s Swaroop.s	360	16 %	240	3 %	290	4 %	115	0 %
158471636463533	Swathi U.p	535	72 %	460	50 %	455	46 %	665	100 %
158471636021321	Swathy Kumar	780	100 %	445	45 %	520	71 %	685	100 %
158471636592492	Swetha Patil	300	6 %	-	-	-	-	-	-
158471636447983	Syeda Fraziya Sami Sami	385	22 %	240	3 %	360	15 %	405	5 %
158471636526431	T Manjunath	395	25 %	285	7 %	340	11 %	385	2 %
158471636607491	Tanushree S	545	75 %	650	94 %	540	77 %	525	64 %
158471636185350	Tejas Porwal	440	39 %	460	50 %	480	56 %	535	70 %
158471636236634	Tejas M N	490	57 %	505	64 %	485	58 %	615	97 %
158471636774490	Tejas B S	465	48 %	225	2 %	335	10 %	405	5 %
158471636953483	Tejas Gowda	350	14 %	195	1 %	335	10 %	335	0 %
158471636928715	Tejas K	580	84 %	430	40 %	435	38 %	685	100 %
158471636770990	Tejas V Tejas V	300	6 %	105	0 %	285	4 %	415	7 %
158471636652342	Tejaswini Tk	385	22 %	370	22 %	265	2 %	295	0 %
158471636676941	Tejaswini.h Tejaswini.h	290	5 %	225	2 %	255	2 %	145	0 %
158471636933330	Tr Varadaraju	315	8 %	355	19 %	445	42 %	415	7 %
158471636628795	Trishul Kt	455	45 %	460	50 %	360	15 %	425	10 %
158471636685393	Tushar Anand	385	22 %	370	22 %	420	33 %	455	21 %
158471636382140	U Abdul Roshan	395	25 %	505	64 %	360	15 %	335	0 %
158471636460140	Udaya S	370	18 %	240	3 %	180	0 %	275	0 %
158471636814666	Udaya Prasada P Krishnamurthy K	535	72 %	520	69 %	395	24 %	595	94 %
158471636911427	Udigirkar Abhinav	455	45 %	225	2 %	325	8 %	-	-
158471636742629	Ujwal Sintre	570	82 %	520	69 %	460	48 %	795	100 %
158471636675323	Ujwalratan Kamble	370	18 %	445	45 %	375	19 %	335	0 %
158471636372852	Ullas Naik	405	28 %	255	4 %	290	4 %	445	17 %
158471636032496	Umera.m Shaikh	430	36 %	415	35 %	400	26 %	345	0 %
158471636007973	Umesh Umesh	255	3 %	300	9 %	250	2 %	365	1 %
158471636322310	Upendra Upendra	350	14 %	165	1 %	310	6 %	205	0 %
158471636676464	Usha Devaraj	385	22 %	635	93 %	315	7 %	255	0 %
158471636242402	Utkarsh Nain	510	64 %	505	64 %	545	79 %	595	94 %
158471636383337	V C Arunkumar Vc	290	8 %	300	15 %	325	15 %	345	0 %
158471636187954	Vadiraj Patil	545	75 %	-	-	435	38 %	425	10 %
158471636143544	Vaibhav Raj	595	87 %	535	73 %	400	26 %	645	99 %
158471636752151	Vaibhav B	500	61 %	590	86 %	435	38 %	555	81 %
158471636791277	Vaibhav Bamanalli	325	9 %	300	9 %	425	35 %	265	0 %
158471636867447	Vaijinath Malge	265	3 %	210	2 %	460	48 %	325	0 %
158471636737210	Vani Vani Seri	405	28 %	310	10 %	325	8 %	355	1 %
158471636050012	Vanlalrinchhana Khawhring	350	14 %	340	16 %	310	6 %	585	91 %
158471636878311	Varalakshmi K S	315	8 %	370	22 %	230	1 %	100	0 %

AMCAT ID	Name	AMCAT Score, Percentile							
		English Comprehension		Quantitative Ability		Logical Ability		Basic IT Applications	
158471636707203	Varsharani Varsharani	315	8 %	285	7 %	325	8 %	145	0 %
158471636809064	Varshini Bn	395	25 %	195	1 %	285	4 %	195	0 %
158471636714621	Varshini J	440	39 %	415	35 %	425	35 %	555	81 %
158471636933643	Varshith S	300	6 %	165	1 %	285	4 %	395	4 %
158471636557580	Varun Hegde	665	96 %	770	100 %	590	89 %	475	32 %
158471636215417	Varun D.s	370	18 %	300	9 %	410	29 %	255	0 %
158471636108358	Varun Cv	360	16 %	370	22 %	375	19 %	365	1 %
158471636563500	Vasanth M	385	22 %	590	86 %	-	-	465	26 %
158471636166568	Vatsala.v V	265	3 %	180	1 %	250	2 %	395	4 %
158471636077088	Vedant Padshetty	325	9 %	180	1 %	360	15 %	295	0 %
158471636777615	Vedha V S	370	18 %	415	35 %	435	38 %	595	94 %
158471636700038	Veershetty Shetty	290	5 %	225	2 %	325	8 %	265	0 %
158471636501772	Venkatesh Antalmarad	385	22 %	340	16 %	395	24 %	145	0 %
158471636664529	Vibha Joshi	510	64 %	415	35 %	485	58 %	675	100 %
158471636228043	Vidya Vidya	325	9 %	225	2 %	-	-	495	45 %
158471636807377	Vidyashree T S	350	14 %	240	3 %	375	19 %	325	0 %
158471636796725	Vijay J Vijay J	220	1 %	415	35 %	340	11 %	135	0 %
158471636835888	Vijaybhaskar T	325	9 %	310	10 %	265	2 %	475	32 %
158471636195619	Vijaylakshmi H.j	405	28 %	-	-	325	8 %	195	0 %
158471636503422	Vijaylakshmi Kalasa	405	28 %	370	22 %	460	48 %	465	26 %
158471636336993	Vijetha S	595	87 %	400	31 %	425	35 %	405	5 %
158471636157583	Vikram B	315	8 %	240	3 %	205	1 %	265	0 %
158471636390384	Vinay H N	500	61 %	400	31 %	520	71 %	595	94 %
158471636362652	Vinayaka Motebennuru Motebennuru	280	4 %	310	10 %	370	17 %	275	0 %
158471636451323	Vinod L Revani	395	25 %	100	0 %	350	13 %	265	0 %
158471636890743	Vinod T	335	11 %	210	2 %	335	10 %	265	0 %
158471636068796	Vinod Kumar	525	69 %	325	13 %	395	24 %	465	26 %
158471636003354	Vinutha C	455	45 %	285	7 %	375	19 %	465	26 %
158471636978029	Vishal K R P	245	2 %	120	0 %	400	26 %	265	0 %
158471636603022	Vishwas Patel	455	45 %	560	80 %	495	62 %	345	0 %
158471636636086	Vishwas.v Vishwas	525	69 %	505	64 %	285	4 %	605	96 %
158471636888917	Vismay G R	325	9 %	240	3 %	400	26 %	525	64 %
158471636053581	Vivek R	395	25 %	415	35 %	385	21 %	485	38 %
158471636264060	Vivekanand Naik	405	28 %	415	35 %	580	87 %	325	0 %
158471636657953	Waseem Bhat	395	25 %	195	1 %	385	21 %	100	0 %
158471636765769	Waseema Malik	395	25 %	255	4 %	455	46 %	585	91 %
158471636888284	Y Amisha Amisha	405	28 %	370	22 %	375	19 %	425	10 %
158471636926675	Yallaling Konek	290	5 %	120	0 %	350	13 %	215	0 %
158471636360796	Yasaswini V	440	39 %	475	55 %	485	58 %	535	70 %
158471636363119	Yash Patrot	500	61 %	460	50 %	315	7 %	545	76 %
158471636730815	Yashas M	570	82 %	105	0 %	350	13 %	425	10 %
158471636619283	Yashaswi H	640	94 %	370	22 %	555	81 %	725	100 %
158471636182802	Yashaswini Gorur	525	69 %	445	45 %	570	85 %	405	5 %
158471636346503	Yashaswini Belly	525	69 %	460	50 %	395	24 %	415	7 %
158471636262035	Yashaswini S	325	9 %	370	22 %	340	11 %	345	0 %

AMCAT ID	Name	AMCAT Score, Percentile							
		English Comprehension		Quantitative Ability		Logical Ability		Basic IT Applications	
158471636375767	Yashaswini Doddamani	545	75 %	300	9 %	460	48 %	275	0 %
158471636058271	Yashaswini.b.n Yashaswini	350	14 %	340	16 %	375	19 %	325	0 %
158471636826427	Yashwanth G	395	25 %	240	3 %	310	6 %	345	0 %
158471636455472	Yaswanth Madugundu	395	25 %	385	26 %	395	24 %	395	4 %
158471636743632	Yatish Shetty	465	48 %	270	6 %	315	7 %	785	100 %
158471636760147	Yogeesh C	405	28 %	445	45 %	275	3 %	415	7 %
158471636894027	Yogesh Gowda	475	52 %	490	60 %	445	42 %	665	100 %
158471636924550	Yr Rao	595	87 %	620	91 %	470	52 %	405	5 %
158471636583344	Zir Sanga	420	32 %	400	31 %	315	7 %	405	5 %

II. Statistical Significance (Confidence)

All score distributions generally follow a pattern called the Gaussian curve. The Gaussian curve is by far the most common assumption with regard to score distribution. For the purpose of comparison, we express AMCAT scores as Gaussian distribution. The most characteristic feature of this distribution is that the scores for maximum number of students fall in a very narrow range around the average value.

The percentage of scores lying in the range falls exponentially as we move away from the average value. The confidence percentage, which ranges from 0% to 100%, is indicative of the possibility that the difference in scores is by chance. A high confidence percentage indicates that it is very likely that the difference observed is real and not by chance. In this analysis, we classify differences, with confidence 90% or higher, as significantly different (that is, not by chance).

III. National Average (Norm)

To construct the norms (National average & standard deviation), balanced sampling was used to select more than 25000 students tested by Aspiring Minds nationwide. Balanced sampling technique ensures that the selected candidates are representative of entry-level job-aspirants over 22 states in India. It is ensured that the sample contains different degrees, specializations, genders, regions, etc. in the same composition as the National distribution.

To summarize score distribution of the norms and Dr Ambedkar Institute Of Technology Bangalore students, two values (statistics) are used: average of the scores and standard deviation of the scores. While the former value indicates what, on average, candidates score in the test, the latter value tells how much do scores deviate from the average. High value of standard deviation means that the scores are dissimilar and spread across the scale. In contrast, a low value of standard deviation means that candidates scores are similar to each other and lie near the average.

IV. Variance (Standard Deviation)

The variance (or standard deviation) is a measure of how spread out a distribution is. In other words, it is the measure of variability. A low standard deviation indicates that the data points tend

to be very close to the average value, while high standard deviation indicates that the data is spread out over a large range of values.

V. About Aspiring Minds

Aspiring Minds was founded in 2007 by alumni of IIT and MIT (USA) with a vision to introduce scientific assessment methodology to bring together job-seekers and campuses across India on a common standardized platform that is recognized by multiple companies on a national level. The aim of Aspiring Minds is to highlight the pool of talented students and progressive campuses to corporates nationally, provide an insight on how they can improve their employability and help them acquire jobs on the basis of their potential. In a short span of time, Aspiring Minds has earned credibility and is working with multiple corporations such as Microsoft Research, HCL Technologies, MPhasiS EDS, Erricson, Tata Motors, Aricent, Genpact, iGATE, L&T Finance, Sapient, Godrej Agrovet and Tavant Technologies.

Board of Advisors

Prof. Tarun Khanna, HBS, USA
Dr. Una-May O'Reilly, MIT, USA
Dr. Vijay Bhushan, PhD., UIUC, USA